



A320 Series Dispatch Performance Data

Copyright © BAVirtual. All rights reserved. Permission granted to reproduce for personal and educational use only. Commercial copying, hiring, lending is prohibited. May be used free of charge. Selling without prior written consent prohibited. Obtain permission before redistributing. In all cases this notice must remain intact.

Record of Amendments

Rev. No	Date Entered

Revision Highlights

Contents

Record of Amendments
KEFLAVIK (BIKF)
ALGIERS (DAAG)
FRANKFURT/MAIN (EDDF)
COLOGNE/BONN (EDDK)
NURNBERG (EDDN)
STUTT GART (EDDS)
FRIEDRICHSHAFEN (EDNY)
KIT TILA (EFKT)
BELFAST CITY (EGAC)
MANCHESTER (EGCC)
INVERNESS/DALCROSS (EGPE)
GLASGOW (EGPF)
EDINBURGH (EGPH)
OSLO/GARDERMOEN (ENGM)
KRAKOW/BALICE (EPKK)
FUERTEVENTURA (GCFV)
LANZAROTE (GCRR)
TENERIFE SUR (GCTS)
AGADIR (GMAD)
MARRAKECH (GMMX)
TIRANA (LATI)
SOFIA (LBSF)
LARNACA (LCLK)
PAFOS (LCPH)
DUBROVNIK (LDDU)
PULA (LDPL)
SPLIT (LDSP)
ZAGREB (LDZA)
ALICANTE (LEAL)
ALMERIA (LEAM)
BILBAO (LEBB)
BARCELONA (LEBL)
MADRID (LEMD)
MALAGA (LEMG)
PALMA de MALLORCA (LEPA)
SANTIAGO (LEST)

VALENCIA (LEVC)
BIARRITZ (LFBZ)
BASTIA (LFKB)
FIGARI SUD CORSE (LFKF)
LYON SAINT EXUPERY (LFLL)
GRENOBLE (LFLS)
MARSEILLE PROVENCE (LFML)
NICE COTE D'AZUR (LFMN)
MONTPELLIER MEDITERRANEE (LFMT)
BALE MULHOUSE (LFSB)
ATHENS(ATH/LGAV)
IRAKLION (LGIR)
KEFALLINIA ANNA POLLATOU (LGKF)
KALAMATA (LGKL)
KOS IPPOKRATIS (LGKO)
KERKIRA CORFU (LGKR)
LIMNOS IFAISTOS (LGLM)
MIKONOS (LGMK)
PREVEZA AKTION (LGPZ)
RHODES DIAGORAS (LGRP)
CHANIA (LGSA)
SANTORINI (LGSR)
THESSALONIKI MAKEDONIA (LGTS)
ZAKYNTHOS (LGZA)
BUDAPEST LISZT FERENC (LHBP)
BARI PALESE (LIBD)
LAMEZIA TERME (LICA)
CATANIA FONTANAROSSA (LICC)
PALERMO PUNTA RAISI (LICJ)
CAGLIARI ELMAS (LIEE)
OLBIA COSTA SMERALDA (LIEO)
MILAN MALPENSA (LIMC)
BERGAMO ORIO AL SERIO (LIME)
TURIN CASELLE (LIMF)
GENOA SESTRI (LIMJ)
MILAN LINATE (LIML)
BOLOGNA BORGIO PANIGALE (LIPE)
VENICE TESSERA (LIPZ)

NAPLES CAPODICHINO (LIRN)
PISA SAN GIUSTO (LIRP)
LJUBLJANA BRINK (LJLJ)
INNSBRUCK (LOWI)
SALZBURG (LOWS)
VIENNA SCHWECHAT (LOWW)
FARO (LPFR)
MADEIRA FUNCHAL (LPMA)
PORTO SANTO F S CARNEIRO (LPPR)
LISBON (LPPT)
GENEVA COINTRIN (LSGG)
ZURICH (LSZH)
IZMIR ADNAN MENDERES (LTBJ)
DALAMAN MUGLA (LTBS)
BODRUM MILAS (LTFE)
ISTANBUL YENI HAVALIMANI (LTFM)
AMMAN QUEEN ALIA INTL (OJAI)

KEFLAVIK (BIKF)**EMERGENCY TURN PROCEDURES****RWY 01****LUTER and OSKUM SIDs**

Engine failure below 4000ft QNH - Continue on RWY heading to KF218. Turn left (If beyond KF218 turn left immediately) to waypoint NORGO for hold and Return.

Engine failure above 4000ft QNH - No restrictions provided SID followed to MSA.

PIXUM and RIMUM SID

Engine failure before KF211 - Continue on RWY heading to KF218. Turn left (If beyond KF218 turn left immediately) to waypoint NORGO for hold and Return.

Engine failure after KF211 - No restrictions provided SID followed to MSA.

DELES RALOV and SORIR SIDs and OMNI 2a departure (Lido SID PT)

No restrictions provided SID or followed.

RWY 10**LUTER, OSKUM, RIMUM and PIXIUM SIDs and OMNI 2b Departure (Lido SID PT)**

Engine failure below 4000ft QNH - Continue on heading 104 deg to VOR/DME KFV 5D. Turn left (if beyond KFV 5D turn left immediately) to waypoint NERKO for hold and return.

Engine failure above 4000ft QNH - No restrictions provided SID followed to MSA.

DELES, RALOV and SORIR SIDs

No restrictions provided SID followed to MSA.

RWY 19**DELES, LUTER, OSKUM, PIXUM, RALOV, RIMUM and SORIR SIDs and OMNI 2c Departure (Lido SID PT)**

No restrictions provided departure procedure followed.

RWY 28**LUTER OSKUM RIMUM and PIXUM SIDs**

Engine failure before KF437 - proceed to KF437. Turn right to SOPAR for hold and return.

Engine failure after KF437 - No restrictions provided SID followed to MSA.

DELES RALOV and SORIR SIDs and OMNI 2d Departure (Lido SID PT)

No restrictions provided SID followed.

ALGIERS (DAAG)

EMERGENCY TURN PROCEDURES

RWY 05

BOURI, CHE, LABRO, MOGIL, PECES, OTARO and SADAF SIDs

No restrictions provided SID followed and MSA achieved.

BJA, BABOR, TAGRO and BSA1C SIDs

Engine failure below 5000ft - Continue on SID until passing ALR 180R then route direct to VOR/DME ZEM for hold/return. Contact ATC for instructions.

Engine failure above 5000ft - No restrictions provided SID followed and MSA achieved.

BSA1G SID

Engine failure below 5000ft - Continue on SID until ALR then route direct to VOR/DME ZEM for hold/return. Contact ATC for instructions.

Engine failure above 5000ft - No restrictions provided SID followed and MSA achieved.

RWY 09

BOURI, CHE, LABRO, MOGIL, PECES, OTARO and SADAF SIDs

No restrictions provided SID followed and MSA achieved.

BJA, BABOR, TAGRO and BSA1D SIDs

Engine failure below 5000ft - Continue on SID until passing ALR 180R then route direct to VOR/DME ZEM for hold/return. Contact ATC for instructions.

Engine failure above 5000ft - No restrictions provided SID followed and MSA achieved.

BSA1H SID

Engine failure below 5000ft - Continue on SID until ALR then route direct to VOR/DME ZEM for hold/return. Contact ATC for instructions.

Engine failure above 5000ft - No restrictions provided SID followed and MSA achieved.

RWY 23

Comply with the following thrust reduction and acceleration profile:

THR RED / ACC 2000 / 2000

ENG OUT ACC 2000

BOURI, CHE, LABRO, MOGIL, PECES, OTARO and SADAF SIDs

Engine failure BEFORE initial turn - Turn right to MAR for hold and return.

Engine failure AFTER initial turn but BELOW 2000ft - Turn right onto HDG 050 (remaining within 4.0d ALR in turn). Turn left to intercept R018 ALR. Climb to MSA.

Engine failure ABOVE 2000ft - No restrictions provided SID followed.

Exercise caution due to Minaret construction up to est. 1000ft amsl located approx. 4.5d ALR on R306.

BJA, BABOR, TAGRO and BSA1A SIDs

Engine failure BEFORE 4d ALR on SID track - Turn right to MAR for hold and return.

Engine failure AFTER 4d ALR on SID track but BEFORE BNA - continue to on SID until passing ALR 180R then route direct to VOR/DME ZEM for hold/return. Contact ATC for instructions.

Engine Failure AFTER BNA - No restrictions provided SID followed and MSA achieved.

BSA1E SID

Not approved

RWY 27

Comply with the following thrust reduction and acceleration profile:

THR RED / ACC 2000 / 2000

ENG OUT ACC 2000

BOURI, CHE, LABRO, MOGIL, PECES, OTARO and SADAF SIDs

Engine failure BEFORE initial turn - Climb ahead to MAR for hold and return.

Engine failure AFTER initial turn but BELOW 2000ft - Turn right onto HDG 090 (remaining within 4.0d ALR in turn). Turn left to intercept R018 ALR. Climb to MSA.

Engine failure ABOVE 2000ft - No restrictions provided SID followed.

Exercise caution due to Minaret construction up to est. 1000ft amsl located approx. 4.5d ALR on R306.

BJA, BABOR, TAGRO and BSA1B SIDs

Engine failure BEFORE SMR - Climb ahead to MAR for hold and return.

Engine failure AFTER SMR but BEFORE BNA - continue to on SID until passing ALR 180R then route direct to VOR/DME ZEM for hold/return. Contact ATC for instructions.

Engine Failure AFTER BNA - No restrictions provided SID Followed and MSA achieved.

BSA1F SID

Not

approved

FRANKFURT/MAIN (EDDF)**NOISE MONITORING****ALL RWYS**

Monitoring points are just off SID tracks. Fly all SIDs as accurately as possible.

EMERGENCY TURN PROCEDURES**RWY 07C & 07R****MARUN5E and OBOKA1E SIDs.**

Engine Failure BEFORE FFM 10d - Follow SID to FFM 10d. Direct MTR. Hold at MTR. Climb to MSA.

Engine Failure AFTER FFM 10d - No restrictions provided SIDs followed to MSA.

CINDY, ANEKI, KOMIB, MARUN9D, MTR, OBOKA1D, RID, SOBRA, SULUS and TOBAK SIDs.

No restrictions provided SID followed to MSA.

RWY 18**CINDY, MARUN6S, OBOKA1L, OBOKA2S, SOBRA, SULUS and TOBAK8S SIDs.**

Engine Failure BEFORE FFM 15d - Follow SID to FFM 15d. Turn to heading 250M. Climb to MSA.

Engine Failure AFTER FFM 15d - No restrictions provided SID followed to MSA.

OBOKA1R SID.

Engine Failure BEFORE MTR - Follow SID to MTR. Hold at MTR. Climb to MSA.

Engine Failure AFTER MTR - No restrictions provided SID followed to MSA.

ANEKI, OBOKA1T, MARUN3R, MARUN4T, TOBAK3R, TOBAK6T and ULKIG SIDs.

No restrictions provided SID followed to MSA.

RWY 25C & 25L**MARUN, OBOKA, TAU and TOBAK SIDs.**

Engine Failure BELOW 3500ft - Turn heading 250M. Climb to MSA.

Engine Failure ABOVE 3500ft - No restrictions provided SID followed to MSA.

CINDY, ANEKI, RID, SOBRA and SULUS SIDs.

No restrictions provided SID followed to MSA.

COLOGNE/BONN (EDDK)**EMERGENCY TURN PROCEDURES****RWY 06****COL7K SID**

Engine failure AFTER VOR/DME COL - no restrictions provided SID followed.

PODIP and KUMIK SIDs

Engine failure BEFORE RNAV WAYPT PODIP - turn right inbound VOR/DME COL then join holding pattern over VOR/DME COL. Contact ATC for return.

Engine failure AFTER RNAV WAYPT PODIP - no restrictions provided SID followed.

WYP and NVO SIDs

No restrictions provided SID followed.

RWY 14L/R**PODIP, COL and KUMIK SIDs**

Engine failure BEFORE VOR/DME COL - follow SID to VOR/DME COL then join holding pattern over VOR/DME COL. Contact ATC for return.

Engine failure AFTER VOR/DME COL - no restrictions provided SID followed.

WYP and NVO SIDs

No restrictions provided SID followed.

RWY 24**PODIP COL and KUMIK SIDs**

Engine failure BEFORE VOR/DME COL - follow SID to VOR/DME COL then join holding pattern over VOR/DME COL. Contact ATC for return.

Engine failure AFTER VOR/DME COL - no restrictions provided SID followed.

WYP and NVO SIDs

No restrictions provided SID followed.

RWY 32L/R**COL SID**

Engine failure BEFORE VOR/DME COL - follow SID to VOR/DME COL then join holding pattern over VOR/DME COL. Contact ATC for return.

Engine failure AFTER VOR/DME COL - no restrictions provided SID followed.

PODIP and KUMIK SIDs

Engine failure BEFORE - RNAV WAYPT PODIP turn right inbound VOR/DME COL then join holding pattern over VOR/DME COL. Contact ATC for return.

Engine failure AFTER RNAV WAYPT PODIP - no restrictions provided SID followed.

WYP and NVO SIDs

No restrictions provided SID followed.

NURNBERG (EDDN)**EMERGENCY TURN PROCEDURES****RWY 10****ERETO and RODIS SIDs**

Engine failure before NDB RTB - Turn left no later than RTB to VOR/DME ERL for hold and return.

Engine failure after NDB RTB - No restrictions provided SID followed.

AKANU, DKB, IBAGA, SUKAD and SULUS SIDs

No restrictions provided SID followed.

STUTTGART (EDDS)**EMERGENCY TURN PROCEDURES****RWY 25****ABTAL, KUNOD, STG and TEDGO SIDs.**

Engine failure before STG 5.9d: Maintain STG 252R to 2500ft AMSL (not later than STG 13d). Turn LEFT to TEDGO.

Engine failure after STG 5.9d: No restrictions provided SIDs followed to MSA.

DKB, ETASA, GEBNO, KRH, OKIBA, ROTWE, SUL, TAGIK and VESID SIDs.

No restrictions provided SIDs followed to MSA.

FRIEDRICHSHAFEN (EDNY)

EMERGENCY TURN PROCEDURES

Rwy 06

ALAGO SID.

Engine failure BELOW 3500ft QNH - Follow SID to NY062 then turn LEFT onto track 220M to intercept VOR/DME ZUE R087 inbound ZUE. Climb to 5000ft QNH then turn RIGHT to MOKOP for hold and return.

Engine failure ABOVE 3500ft QNH - No restrictions provided SID followed.

AMIKI, MOKOP, SITOR and TRA SIDs.

No restrictions provided SIDs followed.

BEMKI and KPT SIDs.

These SIDs are not approved for BA use.

All SIDs.

Crew must ensure MSA is achieved BEFORE continuing beyond SIDs.

Rwy24

ALAGO SID.

Engine failure BELOW 3500ft QNH - Follow SID to NY043 then maintain track 238M (If beyond NY043 continue RIGHT turn onto track 238M) To intercept VOR/DME ZUE R087 inbound ZUE. Climb to 5000ft QNH then turn RIGHT to MOKOP for hold and return.

Engine failure ABOVE 3500ft QNH - No restrictions provided SID followed.

AMIKI, MOKOP, SITOR AND TRA SIDs.

No restrictions provided SIDs followed.

BEMKI and KPT SIDs.

These SIDs are not approved for BA use.

All SIDs.

Crew must ensure MSA is achieved before continuing beyond SIDs.

KITTLA (EFKT)**EMERGENCY TURN PROCEDURES****Rwy 34****Minimum Acceleration Altitude**

2200ft

Omnidirectional Departures

Engine failure BELOW 2130ft QNH - Climb ahead to 2130ft. Turn LEFT to NDB KIT for return.

Engine failure ABOVE 2130ft QNH - No restrictions provided MSA achieved.

BELFAST CITY (EGAC)**EMERGENCY TURN PROCEDURES****RWY 04**

Engine failure below 500ft QNH: Climb on runway track to DME I-HBD 6d (or DME I-BFH 5d). Turn RIGHT onto track 060°M. Climb to MSA.

Engine failure above 500ft QNH: Climb on track 033°M to 3000ft.

Engine failure above 3000ft QNH: No restrictions provided departure routes followed to MSA.

RWY 22

Engine failure below 3000ft QNH: Climb on runway heading to DME IBFH 9.5d (or DME I-HBD 8.5d). Turn LEFT onto track 110°M. Climb to MSA and contact ATC.

Engine failure above 3000ft QNH: No restrictions provided departure routes followed to MSA.

MANCHESTER (EGCC)**EMERGENCY TURN PROCEDURES****RWY 05L & 05R:****DESIG and POL SIDs:**

Climb ahead to MCT 6d. Turn LEFT to MCT. Clean up on completion of the LEFT turn.

LISTO, MONTY and ASMIM SIDs:

No restrictions provided SIDs followed to MSA.

Terrain clearance on SIDs has been checked to MCT 20d.

RWY 23L & 23R:**EKLAND, KUXEM, LISTO, MONTY, POL, SANBA and SONEX SIDs:**

No restrictions provided SID followed to MSA.

Terrain clearance on SIDs has been checked to MCT 20d.

INVERNESS/DALCROSS (EGPE)**PERFORMANCE RESTRICTIONS****RWY 05****Initial terrain clearance**

Climb ahead to 1500ft QNH before turning enroute.

Emergency Turn Procedures

Climb on RWY track to MSA. Contact ATC for return.

Windshear

Strong sth winds at altitude may cause windshear at any height even with sfc winds below 5kts.

RWY 23**Initial terrain clearance**

Climb ahead to 2000ft QNH before turning enroute.

Emergency Turn Procedures

Climb ahead to VOR/DME INS 5d. Turn RIGHT to return and join VOR/DME INS hold.

Windshear

Strong sth winds at altitude may cause windshear at any height even with sfc winds below 5kts.

GLASGOW (EGPF)**EMERGENCY TURN PROCEDURES****RWY 05****CLYDE, FOYLE, LOMON, NORBO, PTH and ROBBO SIDs.**

Engine failure before XEXUS: Follow SID to XEXUS. Turn RIGHT to GOW.

Engine failure after XEXUS: No restrictions provided that SIDs followed to MSA.

RWY 23**CLYDE, FOYLE, LOMON, NORBO, PTH and ROBBO SIDs.**

Engine failure before XETUN or GOW 4.7d on SID track: Follow SID to GOW 3d. Turn RIGHT (if beyond GOW 3d turn immediately) to GOW.

Engine failure after XETUN or GOW 4.7d on SID track: No restrictions provided that SIDs followed to MSA.

EDINBURGH (EGPH)**EMERGENCY TURN PROCEDURES****RWY 06****GOSAM, GRICE and TLA SIDs.**

Engine failure BEFORE IVG 3d - Follow SID to IVG 3d. Turn RIGHT onto track 069M. Climb to MSA.

Engine failure AFTER IVG 3d - No restrictions provided SIDs followed to MSA.

RWY 24**GOSAM, GRICE and TLA SIDs.**

Engine failure BEFORE UW - Follow SID to UW. Turn RIGHT (remain within ITH 7.5d arc during turn) onto track 059M. Climb to MSA.

Engine failure AFTER UW - No restrictions provided SIDs followed to MSA.

OSLO/GARDERMOEN (ENGM)

EMERGENCY TURN PROCEDURES

RWY 01L

ATLAP, MASEV, OKSAT and TOR SIDs

Engine failure before GM437: Follow SID to GM436. Turn LEFT (if beyond GM436 turn LEFT immediately) to VALPU.

Engine failure after GM437: No restrictions provided SIDs followed to MSA.

EVTOG and NUVSA SIDs

Engine failure before GM438: Follow SID to GM436. Turn LEFT (if beyond GM436 turn LEFT immediately) to VALPU.

Engine failure after GM438: No restrictions provided SIDs followed to MSA.

VEMIN SID

Terrain clearance has not been checked on this SID and the associated transitions.

RWY 01R

ATLAP, EVTOG and TOR SIDs

Engine failure before GM440 (or GM528 if on SID): Follow SID to GM440 (or GM528). Turn RIGHT to INSUV.

Engine failure after GM440 (or GM528 if on SID): No restrictions provided SIDs followed to MSA.

MASEV, NUVSA and OKSAT SIDs

Engine failure before GM506: Follow SID to GM506. Turn RIGHT to INSUV.

Engine failure after GM506: No restrictions provided SIDs followed to MSA.

RWY 19L

ATLAP, EVTOG and TOR SIDs

Engine failure before GM602: Follow SID to GM602. Turn LEFT to TITLA.

Engine failure after GM602: No restrictions provided SIDs followed to MSA.

MASEV, NUVSA and OKSAT SIDs

Engine failure before GM444: Follow SID to GM444. Turn LEFT to TITLA.

Engine failure after GM444: No restrictions provided SIDs followed to MSA.

VIBUK SID

Terrain clearance has not been checked on this SID and the associated transitions.

RWY 19R

ATLAP, EVTOG, MASEV, NUVSA, OKSAT and TOR RNAV SIDs.

Engine failure before GM442: Intercept and follow GRM 194R. Climb to MSA. Contact ATC for return.

Engine failure after GM442: No restrictions provided SIDs followed to MSA.

VEMIN SID

Terrain clearance has not been checked on this SID and the associated transitions.

KRAKOW/BALICE (EPKK)**EMERGENCY TURN PROCEDURES****RWY 07****BABKO, REGTO and TUSIN SIDs**

Engine Failure BEFORE KK813:

- Follow SID to KK813.
- Turn right towards KAK.
- Contact ATC for instructions and climb to MSA.

Engine Failure AFTER KK813:

- No restrictions provided SID followed to MSA.

BAREX, EMBIK, LUXAR, NAVUR, NUMBA, POBOK and SUDOL SIDs.

No restrictions provided SID followed to MSA.

RWY 25**BABKO, LUXAR and REGTO SIDs.**

Engine Failure BEFORE KK621:

- Follow SID to KK621.
- Turn direct KK617 - TUSIN.
- Climb to MSA.

Engine Failure AFTER KK621:

- No restrictions provided SID followed to MSA.

BAREX, EMBIK, NAVUR, NUMBA, POBOK, SUDOL and TUSIN SIDs.

No restrictions provided SID followed to MSA.

FUERTEVENTURA (GCFV)

EMERGENCY TURN PROCEDURES

Rwy01

KORAL, LARYS, LORPO, LUNOB, MAPED, SAMAR and VASTO SIDs.

Engine failure BEFORE ADOVO or FV672: Follow SID to ADOVO or FV672. Turn RIGHT to TENDA for hold and return.

Engine failure AFTER ADOVO or FV672: No restrictions provided SIDs followed.

Contingency Departure

Engine Failure BELOW 4000ft: Climb on Rwy heading to MSA. Contact ATC for return.

Engine Failure ABOVE 4000ft: No restrictions provided MSA achieved.

Rwy19

KORAL, LUNOB, MAPED, SAMAR and VASTO SIDs.

Engine failure BEFORE FTV 5d or FV780: Follow SID to FTV 5d or FV780. Climb on Rwy heading to MSA and contact ATC for return.

Engine failure AFTER FTV 5d or FV780: No restrictions provided SIDs followed.

LARYS and LORPO SIDs.

Engine failure BELOW 2600ft: Follow SID to FTV 5.4d. Climb on Rwy heading to MSA. Contact ATC for return.

Engine failure ABOVE 2600ft: No restrictions provided SIDs followed.

Contingency Departure

Engine failure BELOW 4000ft: Climb on Rwy heading to MSA. Contact ATC for return.

Engine failure ABOVE 4000ft: No restrictions provided MSA achieved.

LANZAROTE (GCRR)

EMERGENCY TURN PROCEDURES

RWY 03

BAMKU, KORAL, KEMEV, LARYS, LORPO, SAMAR, SOTAD, TENDA and VASTO SIDs
EO SID coded for RWY03 - designated "EO03" on the MCDU DEPARTURE Page and is automatically loaded for all RWY03 departures (Except Contingency DEP).

EO03 Coding: THR03 - EORR1 - EORR2 - ALEDU

See page GCRR-ETP-2 for EO03 EOSID chart. Note that at present EOSIDs are not available in the FSLabs A32X so the EOSID will need to be coded in the secondary flight plan for now.

Procedure

- Engine failure BEFORE EORR1 – Activate EO SID. At EORR1 follow Flight Directors to turn RIGHT to EORR2 then ALEDU.
- Engine failure AFTER EORR1 but BELOW 2500ft – EO SID not selectable. Turn RIGHT immediately to heading 110. Climb to MSA.
- Engine failure ABOVE 2500ft – No restrictions provided SID followed to MSA.

Contingency Departure (Lido SIDPT)

Not authorised as EO SID is not selectable.

RWY 21

KORAL1W, SAMAR and VASTO SIDs.

Engine failure before LTE 6.8d or MAPOV: Follow SID to LTE 6.8d or MAPOV. Turn to BAPAL for hold and return.

Engine failure after LTE 6.8d or MAPOV: No restrictions provided that SID followed to MSA.

KEMEV, LARYS, LORPO and TENDA SIDs.

Engine failure before LTE 5.3d: Follow SID to LTE 5.3d. Turn LEFT to BAPAL for hold and return.

Engine failure after LTE 5.3d: No restrictions provided that SID followed to MSA.

BAMKU, KORAL5N and SOTAD SIDs.

No restrictions provided that SID followed to MSA.

Contingency DEP (Lido SIDPT).

Engine failure before 4000ft QNH: Turn LEFT to BAPAL for hold and return.

Engine failure after 4000ft QNH: No restrictions provided that SID followed to MSA.

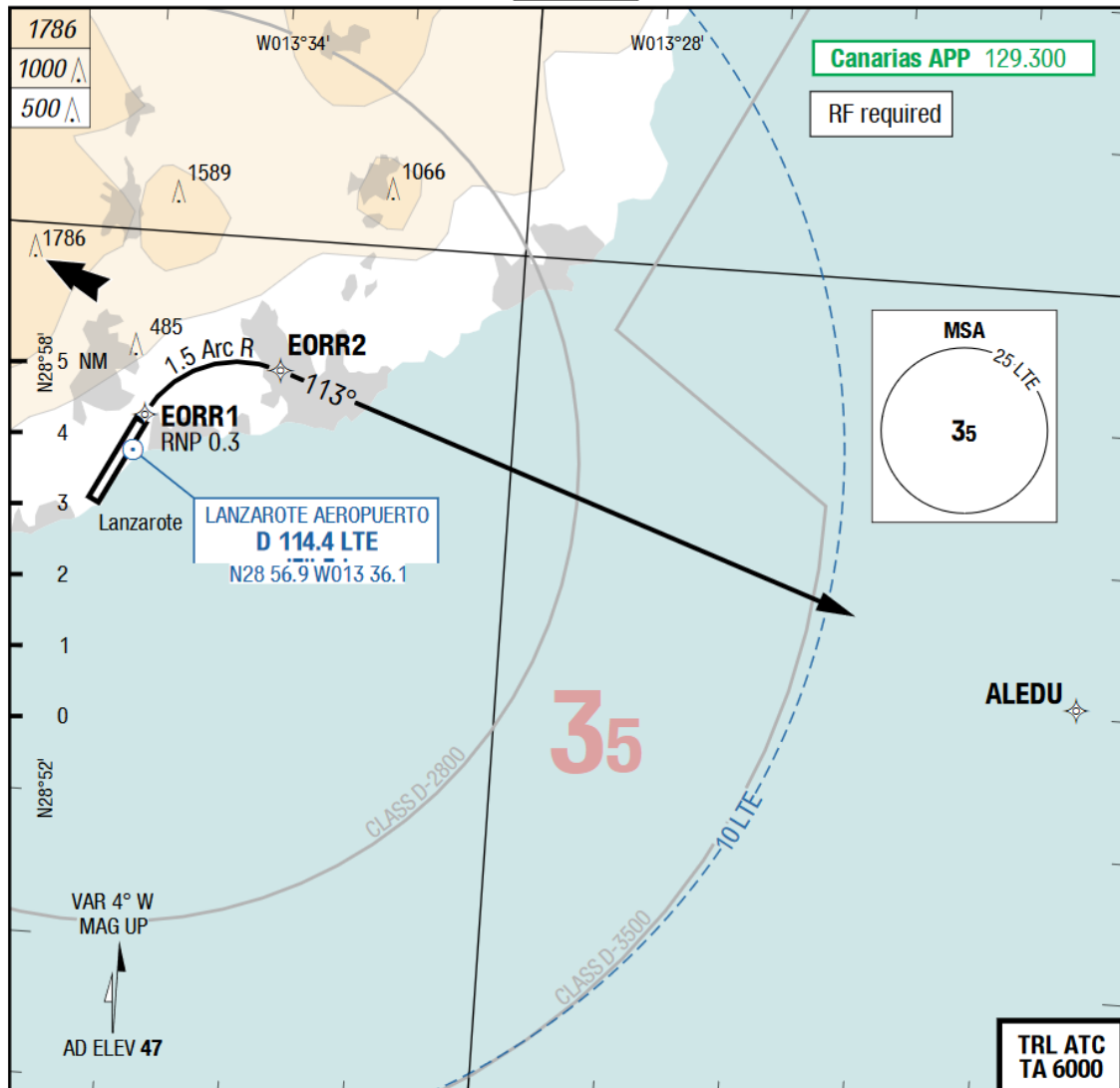
Spain Lanzarote

06-APR-2017

ACE-GCRR

4-01

EOSID RWY 03



RWY 03
EORR1 - EORR2 - ALEDU

TENERIFE SUR (GCTS)

EMERGENCY TURN PROCEDURES

RWY 07

KOPUD, KORAL, RASEP and VASTO SIDs.

Engine failure before TENAR: No restrictions provided that SIDs followed to MSA. Ensure that altitude requirement of 9000ft QNH is achieved before continuing beyond TENAR.

Engine failure after TENAR: No restrictions provided that SIDs followed to MSA.

ARACO, BIMBO, HIE, KONBA, LPC, ODEGI, REMGI, SAMAR and VIDRI SIDs.

No restrictions provided that SIDs followed to MSA.

RWY 25

KOPUD, KORAL, RASEP, SAMAR and VASTO SIDs.

Engine failure before MERAN: No restrictions provided that SIDs followed to MSA. Ensure that altitude requirement of 9000ft QNH is achieved before continuing beyond MERAN.

Engine failure after MERAN: No restrictions provided that SIDs followed to MSA.

ARACO, BIMBO, HIE, KONBA, LPC, ODEGI, REMGI and VIDRI SIDs.

No restrictions provided that SIDs followed to MSA.

AGADIR (GMAD)**EMERGENCY TURN PROCEDURES****RWY 09****MOGBA SIDs**

Engine failure BELOW 6000ft - Follow SID onto heading 274° (If beyond D16 ADM turn left onto heading 270°). Climb to MSA.

Engine failure ABOVE 6000ft - No restrictions provided SIDs followed and MSA achieved.

AGALI SID

Engine failure BELOW 10000ft - Follow SID onto heading 274° (If beyond D16 ADM turn left onto heading 270°). Climb to MSA.

Engine failure ABOVE 10000ft - No restrictions provided SIDs followed and MSA achieved.

KEGAG AND OLOMA SIDs

Engine failure BELOW 10000ft - Return to VOR ADM for hold and return.

Engine failure ABOVE 10000ft - No restrictions provided SIDs followed and MSA achieved.

TIKVO and ARSOL SIDs

Engine failure BELOW 6000ft - Turn right to VOR ADM for hold and return.

Engine failure ABOVE 6000ft - No restrictions provided SIDs followed and MSA achieved.

TEKNA, GOSPI AND DEVLA SIDs

No restrictions provided SIDs followed and MSA achieved.

RWY 27**MOGBA SIDs**

Engine failure BELOW 6000ft - Follow SID onto R257 ADM (If beyond D16 ADM turn left onto 270°). Climb to MSA.

Engine failure ABOVE 6000ft - No restrictions provided SIDs followed and MSA achieved.

AGALI SID

Engine failure BELOW 10000ft - Follow SID onto R257 ADM (If beyond D16 ADM turn left onto 270 deg). Climb to MSA.

Engine failure ABOVE 10000ft - No restrictions provided SIDs followed and MSA achieved.

KEGAG and OLOMA SIDs

Engine failure BELOW 10000ft - Return to VOR ADM for hold and return.

Engine failure ABOVE 10000ft - No restrictions provided SIDs followed and MSA achieved.

TIKVO AND ARSOL SIDs.

Engine failure BELOW 6000ft - Return to VOR ADM for hold and return (Right turn only if beyond D10 ADM).

Engine failure ABOVE 6000ft - No restrictions provided SIDs followed and MSA achieved.

TEKNA GOSPI AND BULOK SIDS.

No restrictions provided SIDs followed and MSA achieved.

MARRAKECH (GMMX)**EMERGENCY TURN PROCEDURES****Rwy10****BGA, BKO, MGW and MBP SIDs.**

Engine failure before MAK 10d: Turn immediately RIGHT (not below 400ft AAL) onto track 280

M. Climb to MSA.

Engine failure after MAK 10d: No restrictions provided that SIDs followed to MSA.

MKR and LSR SIDs.

These SIDs are NOT authorised for BA operation.

Rwy28**BGA, MBP and MGW SIDs.**

Engine failure before MAK 2.5d (beyond MAK): Follow SID to MAK 2.5d (beyond MAK). Maintain runway heading to MSA.

Engine failure after MAK 2.5d (beyond MAK): No restrictions provided that SIDs followed to MSA.

MKR and LSR SIDs.

These SIDs are NOT authorised for BA operation.

TIRANA (LATI)**EMERGENCY TURN PROCEDURES****RWY 17****DIRES, DITAN, ELBAK, INLOT and RINAV SIDs.**

Engine failure before TRN 10d: Follow SID to TRN 10d. Turn RIGHT onto heading 270°. Climb to MSA.

Engine failure after TRN 10d: No restrictions provided SID followed to MSA.

ODRAS SID

Not authorised for BA use. Terrain clearance not assessed.

RWY 35**DIRES, DITAN, ELBAK, INLOT and RINAV SIDs.**

Engine failure before TRN 8d: Follow SID to TRN 8d. Turn LEFT to intercept TRN 324R to TRN 16d for hold (VOR 35 Missed Approach Hold).

Engine failure after TRN 8d: No restrictions provided SID followed to MSA.

ODRAS SID

Not authorised for BAV use. Terrain clearance not assessed.

SOFIA (LBSF)

EMERGENCY TURN PROCEDURES

RWY 09

DEDIN2V, DILVO5A, GAPVO2V, GOL4A, OMENO3V, RUMEN5A and UMPIT2V SIDs.

Engine failure BEFORE SOF 13.2d - Follow SID. Turn LEFT to BOZ not later than SOF 13.2d (refer to note below). Proceed to BENGGO for hold.

Engine failure AFTER SOF 13.2d - No restrictions provided SIDs followed to MSA.

DEDIN1S, DILVO1S, GAPVO1S, GODEK, GOL2S, NAPET, OGOTA, OMENO1S, RUMEN1S and UMPIT2S SIDs.

Engine failure BELOW 5000ft - Climb on RWY track. Turn LEFT to BOZ not later than SOF 10.8d (refer to note below). If already inbound to SF502 turn left immediately to BOZ. Proceed to BENGGO for hold.

Engine failure ABOVE 5000ft - No restrictions provided SID followed to MSA.

Note

Turns by SOF 10.8d or SOF 13.2d (as appropriate) must not cross BLO 298R unless above 4000ft QNH or cross BLO 304R unless above 5000ft QNH.

RWY 27

DEDIN, DILVO, GAPVO, GODEK, GOL, OGOTA, OMENO, RUMEN and UMPIT SIDs

Engine failure BEFORE SF701 (RNAV SIDs) or SOF 8D (CONVENTIONAL SIDs) - Turn RIGHT to intercept and follow SOF 350R to SOF 8D. Turn LEFT to BOZ (do not cross SOF 11D arc in turn unless above 4000ft QNH). Proceed to BENGGO for hold.

Engine failure AFTER SF701 or SOF 8D - No restrictions provided SID followed to MSA.

NAPET SID

Engine failure BELOW 3500ft - Turn RIGHT to intercept and follow SOF 350R to SOF 8D. Turn LEFT to BOZ (do not cross SOF 11D arc in turn unless above 4000ft QNH). Proceed to BENGGO for hold.

Engine failure ABOVE 3500ft – No restrictions provided SID followed to MSA.

LARNACA (LCLK)

EMERGENCY TURN PROCEDURES

RWY 04

BONEK1D and PAFOS SIDs

Engine failure before LCA 3d: Follow SID to LCA 3d. Turn RIGHT to REXAL for hold and return.

Engine failure after LCA 3d: No restrictions provided that SID followed to MSA.

BONEK1W SID

Engine failure below 3000ft QNH: Follow SID to LK400. Turn RIGHT (if beyond LK400 turn immediately) to REXAL for hold and return.

Engine failure above 3000ft QNH: No restrictions provided SID followed to MSA.

BONEK1C and LUBES SIDs

Engine failure before heading 225°M in RIGHT turn: Follow SID towards 225°M. Turn to REXAL for hold and return.

Engine failure after heading 225°M in RIGHT turn and before LCA: Follow SID to LCA for hold and return.

Engine failure after LCA: No restrictions provided that SID is followed.

EMEDA, EMILI, KOBER and RUDER SIDs.

No restrictions provided that SID followed to MSA.

RWY 22

BONEK1E SID

Engine failure before LCA 10d on SID track: Follow SID to NDB LCA. Turn LEFT (if beyond NDB LCA turn LEFT immediately) to BOSIS for hold and return.

Engine failure after LCA 10d: No restrictions provided that SID is followed.

LUBES2B and PAFOS SIDs

Engine failure before RIMEX: Follow SID. Turn LEFT (not later than RIMEX) to BOSIS for hold and return.

Engine failure after RIMEX: No restrictions provided that SID is followed.

BONEK1B and LUBES1D SIDs

Engine failure before heading 045°M in LEFT turn: Follow SID towards 045°M. Turn to REXAL for hold and return.

Engine failure after heading 045°M in LEFT turn and before LCA: Follow SID to LCA for hold and return.

Engine failure after LCA: No restrictions provided that SID is followed.

EMEDA, EMILI, KOBER and RUDER SIDs

No restrictions provided that SID followed to MSA.

RWY 04/22:

SID tracks and LCA hold checked for terrain clearance. Published SID altitudes may not be met. Ensure MSA is achieved before continuing beyond published SID.

PAFOS (LCPH)

EMERGENCY TURN PROCEDURES

Rwy11

DIPOS1C and LOSOS1C SIDs.

Engine failure before return to PHA: Follow SID to PHA for hold and return.

Engine failure after return to PHA: No restrictions provided that SIDs followed.

DIPOS1B and LOSOS1B SIDs.

Engine failure before PHA 6d or 2000ft QNH whichever earlier: Follow SID to PHA 6d then turn RIGHT to PHA for hold and return.

Engine failure after PHA 6d or 2000ft QNH whichever earlier: No restrictions provided that SIDs followed.

TOBAL SIDs:

No restrictions provided that SIDs followed.

Rwy29

DIPOS and LOSOS SIDs.

Engine failure before PHA: Follow SID to PHA for hold and return.

Engine failure after PHA: No restrictions provided that SIDs followed.

TOBAL SIDs:

No restrictions provided that SIDs followed.

DUBROVNIK (LDDU)**EMERGENCY TURN PROCEDURES****RWY 11:**

Climb ahead to GR (VOR/DME DBK 2.1D). Turn RIGHT to intercept and follow 182R from DBK. Hold at 15d DBK.

In all operations crews must ensure that the aircraft remains within VOR/DME 4.5D during the initial right turn in order to ensure that terrain clearance is achieved.

PULA (LDPL)**EMERGENCY TURN PROCEDURES****RWY 09****CRES, LABIN, LOSINJ and VRSAR SIDs**

Engine failure BEFORE KAV - Continue on RWY heading to CRE for hold and return.

Engine failure AFTER KAV - No restrictions provided SID followed to MSA.

GEMKA GIRDA and RIJEKA SIDs

Engine failure BEFORE D10 PUL - Continue on RWY heading to CRE for hold and return (if beyond KAV RT immediately to CRE).

Engine failure AFTER D10 PUL - No restrictions provided SID followed to MSA.

RWY 27**CRES, LABIN, LOSINJ and VRSAR SIDs**

Engine failure BEFORE D3 PUL - Continue on RWY heading to PLA for hold and return.

Engine failure AFTER D3 PUL - No restrictions provided SID followed to MSA.

GEMKA, GIRDA and RIJEKA SIDs

Engine failure BEFORE D10 PUL - Continue on RWY heading to PLA for hold and return (if beyond D10 PUL LT immediately to PLA).

Engine failure AFTER D10 PUL - No restrictions provided SID followed to MSA.

SPLIT (LDSP)

EMERGENCY TURN PROCEDURES

RWY 05

Crews must ensure that the aircraft remains within VOR/DME SPL 4.6d arc during the initial right turn in order to ensure terrain clearance achieved.

KENEM 8H, ORAKA, REMPI, RILIM, SAL, SIPAL, SIRMI, TORPO, UNIPA, VELUG and ZDA SIDs

Engine failure BELOW 480ft QNH: Climb on RWY track to VOR/DME SPL 3.5d. Turn RIGHT heading 160 degrees. Crossing SPL 108R, turn RIGHT to LASUL for hold and return.

Engine failure ABOVE 480ft QNH but BEFORE crossing SPL 108R: Follow SID to SPL 108R. Turn RIGHT to LASUL for hold and return.

Engine failure AFTER crossing SPL 108R: No restriction provided SIDs followed.

Ensure MSA achieved before proceeding beyond VOR/DME SPL.

KENEM 7G and VELIT 6D SIDs

Not checked for terrain clearance.

RWY 23

KEMIX, ORAKA, RILIM, SIPAL, VELIT, VELUG and ZDA SIDs

Engine failure BEFORE DVN: Follow SID to DVN. Turn LEFT to LASUL for hold and return.

Engine failure AFTER DVN: No restrictions provided SIDs followed.

SAL, TORPO and ZDA SIDs

Engine failure BEFORE 5D IST: Follow SID to 5D IST. Continue ahead to DVN. Turn LEFT to LASUL for hold and return.

Engine failure AFTER 5D IST: No restrictions provided SID followed.

KENEM, REMPI, SIRMI, SPL and UNIPA SIDs

Engine failure BEFORE 42.3D ZDA on SID track: Follow SID to 5D IST. Continue ahead to DVN (If beyond 5D IST turn left immediately to DVN). Turn LEFT to LASUL for hold and return.

Engine failure AFTER 42.3D ZDA on SID track: No restrictions provided SID followed.

ZAGREB (LDZA)**EMERGENCY TURN PROCEDURES****RWY 05****KOTOR MOSAV NIVES OBUTI PETOV PODET RASIN TEBLI and VBA conventional SIDs.**

Engine failure BEFORE SK - Follow SID to SK. Maintain trk 043M to ZAG for hold and return.

Engine failure AFTER SK - No restrictions provided SIDs followed to MSA.

KOTOR MOSAV NIVES PODET TEBLI and VBA RNAV SIDs.

Engine Failure BEFORE initial turn on SID track - Continue on track 043 to ZA802 for hold at ZAG.

Engine Failure AFTER initial turn - No restrictions provided SID followed to MSA.

KOPRY and OBUTI RNAV SIDs

Engine Failure BEFORE ZA801 - Continue on track 043 to ZA802 or hold at ZAG.

Engine Failure AFTER ZA801 - No restrictions provided SID followed to MSA.

RWY 23**KOTOR MOSAV NIVES OBUTI PETOV PODET TEBLI VBA and ZAG Conventional SIDs.**

Engine failure BEFORE LUK 2d (beyond the facility) - Follow SID to LUK 2d. Maintain trk 225M to PIS for hold and return.

Engine failure AFTER LUK 2d (beyond the facility) - No restrictions provided SIDs followed to MSA.

KOPRY KOTOR MOSAV NIVES OBUTI PODET TEBLI VBA RNAV SIDs.

Engine failure BEFORE ZA901 - Follow SID to ZA901. Maintain trk 225M to PIS for hold and return.

Engine failure AFTER ZA901 - No restrictions provided SID followed to MSA.

ALICANTE (LEAL)**EMERGENCY TURN PROCEDURES****Rwy10****MITOS, SOPET and VLC SIDs.**

Engine failure before SUMMO: Follow SID to SUMMO then turn RIGHT to MAGAL for hold and return.

Engine failure after SUMMO: No restrictions provided that SIDs are followed.

ASTRO, CATON, RESTU and YES SIDs.

Engine failure before ALT: Follow SID to ALT for hold and return.

Engine failure after ALT: No restrictions provided that SIDs are followed.

MAGAL SID and Contingency Departure.

No restrictions provided that SIDs are followed.

Rwy28**ASTRO, CATON and VLC SIDs.**

Engine failure before ALT 9.5d: Turn LEFT immediately to MAGAL for hold and return.

Engine failure after ALT 9.5d and before VILNA: Follow SID to VILNA then turn RIGHT and follow ALT 20d arc to BESOR for hold and return.

Engine failure after VILNA: No restrictions provided that SIDs are followed.

RESTU and YES SIDs.

Engine failure before ALT 10d: Turn LEFT immediately to MAGAL for hold and return.

Engine failure after ALT 10d: No restrictions provided that SIDs are followed.

MAGAL, MITOS and SOPET SIDs.

Engine failure before ALT 9.5d: Turn LEFT immediately to MAGAL for hold and return.

Engine failure after ALT 9.5d: No restrictions provided that SIDs are followed.

Contingency Departure.

Engine failure before 4500ft QNH: Follow SID to 1000ft AAL then turn LEFT (if beyond 1000ft AAL turn LEFT immediately) to MAGAL for return.

Engine failure after 4500ft QNH: No restrictions on ATC route provided MSAs achieved.

ALMERIA (LEAM)**EMERGENCY TURN PROCEDURES****RWY 07 CONVENTIONAL SIDs:****VADAT SID**

No restrictions provided SID followed with early RIGHT turn completed inside AMR 4d arc.

ESILA, KUNEN SIDs via AMR R235.

Engine failure BEFORE AMR R235 15d - Turn to MAXET. If engine failure BELOW 850ft QNH ensure early turn completed within AMR 4d arc.

Engine failure AFTER AMR R235 15d - No restrictions provided SIDs followed to MSA.

AGIDO, DOSEK, ESILA, RISPO SIDs via AM.

Engine failure BEFORE AM - Turn RIGHT (within AMR 4d arc) to MAXET.

Engine failure AFTER AM and BEFORE AMR 15d - Turn RIGHT to intercept AMR R050. Climb to MSA.

Engine failure AFTER AMR 15d - No restrictions provided SIDs followed to MSA.

AGIDO, ESILA, RISPO SIDs via AMR R358.

Engine failure BEFORE 850ft QNH - Turn RIGHT (within AMR 4d arc) to MAXET.

Engine failure AFTER 850ft QNH and BEFORE AMR 15d - Turn immediately RIGHT to intercept AMR R050. Climb to MSA.

Engine failure AFTER AMR 15d - No restrictions provided SIDs followed to MSA.

RWY 07 RNAV SIDs:**ESILA and KUNEN RNAV SIDs**

Engine failure before AM411 - Follow SID to AM410. Turn right to MAXET for hold and return.

Engine failure after AM411 - No restrictions provided SID followed to MSA.

AGIDO DOSEK and RISPO RNAV SIDs

Engine failure BEFORE AM401 - Turn RIGHT (within AMR 4d arc) to MAXET.

Engine failure AFTER AM401 and BEFORE AM402 - Turn RIGHT to intercept AMR R050. Climb to MSA.

Engine failure AFTER AM402 - No restrictions provided SIDs followed to MSA.

RWY 25 CONVENTIONAL SIDs:**VADAT SID**

No restrictions provided SID followed.

KUNEN1E SID.

Engine failure BEFORE AMR 15d - Follow SID to AMR 15d. Turn LEFT to MAXET.

Engine failure AFTER AMR 15d - Turn immediately LEFT to MAXET unless MSA achieved.

AGIDO DOSEK ESILA RISPO SIDs via AMR 17d arc.

Engine failure BEFORE AMR 15d - Turn LEFT to MAXET.

Engine failure AFTER AMR 15d and BEFORE AMR R292 on AMR 17d arc - Turn immediately RIGHT onto to MAXET.

Engine failure AFTER AMR R292 on AMR 17d arc - No restrictions provided SIDs followed to MSA.

DOSEK ESILA KUNEN RISPO SIDs via AMR.

Engine failure BEFORE AMR - Turn to MAXET.

Engine failure AFTER AMR - No restrictions provided SIDs followed to MSA.

RWY 25 RNAV SIDs:**VADAT RNAV SID**

No restrictions provided SID followed.

ESILA RNAV SID

Engine failure before AM502 - Turn left to MAXET for hold and return.

Engine failure after AM502 and below 9500ft - Turn right immediately to MAXET for hold and return.

Engine failure above 9500ft - No restrictions provided SID followed to MSA.

KUNEN RNAV SID

Engine failure before AM503 - Turn left to MAXET for hold and return.

Engine failure after AM503 - No restrictions provided SID followed to MSA.

AGIDO DOSEK and RISPO SIDs

Engine failure BEFORE AM531 - Turn DCT to MAXET for hold and return.

Engine failure AFTER AM531 - No restrictions provided SID followed to MSA.

BILBAO (LEBB)**EMERGENCY TURN PROCEDURES****RWY 12****AMTOS, BISKA, CALCE, DOSUL, MAPAX, PPN and SSN SIDs.**

Engine failure BEFORE LUKEP:

- Follow SID to LUKEP.
- Intercept R116 BLV to BLV 9.5d.
- Turn LEFT (max 210kts) onto track 360M.
- Climb to MSA.

Engine failure AFTER LUKEP

- No restrictions provided MSA achieved or SID followed.

If cleared on Contingency Departure (LIDO SID PT 5-20).

Engine failure BELOW 1800ft QNH:

- Climb ahead to OXERA.
- Turn LEFT (max 210kts) onto track 360M.
- Climb to MSA.

Engine failure ABOVE 1800ft QNH and BELOW 3000ft QNH:

- Turn immediately LEFT onto track 310M. Climb to MSA.

Engine failure ABOVE 3000ft QNH

- No restrictions provided MSA achieved or SID followed.

RWY 28**AMTOS, BISKA, CALCE, DOSUL, MAPAX, PPN and SSN SIDs.**

Engine failure BEFORE SANTU:

- Follow SID to SANTU
- Turn RIGHT onto track 360M.
- Climb to MSA.

Engine failure AFTER SANTU

- No restrictions provided MSA achieved or SID followed.

If cleared on Contingency Departure (LIDO SID PT 5-30).

Engine failure BELOW 4500ft QNH:

- Turn immediately RIGHT (not below 400ft AAL) onto track 360M.
- Climb to MSA.

Engine failure ABOVE 4500ft QNH

- No restrictions provided MSA achieved or SID followed.

RWY 30**AMTOS BISKA CALCE DOSUL MAPAX PPN and SSN SIDs.**

Engine failure BEFORE BLV 8d

- Follow SID to BLV 8d
- Continue on R314 BLV.
- Climb to MSA.

Engine failure AFTER BLV 8d

- No restrictions provided MSA achieved or SID followed.

If cleared on Contingency Departure (LIDO SID PT 5-40).

Engine failure BELOW 4500ft QNH:

- Climb on Rwy track to 800ft QNH
- Turn RIGHT onto track 360M.
- Climb to MSA.

Engine failure ABOVE 4500ft QNH

- No restrictions provided MSA achieved or SID followed.

BARCELONA (LEBL)**EMERGENCY TURN PROCEDURES****Conventional SIDs - East Configuration****RWY 02, 07L, 07R****GRAUS, LOBAR, MOPAS and OKABI SIDs**

Engine failure **before** CLE 2d: Follow SID to CLE 2d. Turn RIGHT to RULOS.

Engine failure **after** CLE 2d but **before** AKOPA or POBIL: Turn LEFT to VLA.

Engine failure **after** AKOPA or POBIL: No restrictions provided that SIDs followed to MSA.

CLE and VLA SIDs.

Engine failure **before** CLE 2d: Follow SID to CLE 2d. Turn RIGHT to RULOS.

Engine failure **after** CLE 2d: No restrictions provided that SIDs followed to MSA.

RWY20**GRAUS, LOBAR, MOPAS and OKABI SIDs via AKOPA or POBIL.**

Engine failure **before** CORVA: Follow SID to CORVA. Turn RIGHT to VIBIM.

Engine failure **after** CORVA but before AKOPA or POBIL: Turn LEFT to VLA.

Engine failure **after** AKOPA or POBIL: No restrictions provided that SIDs followed to MSA.

SIDs to VOR/DME 'CLE' and VOR/DME 'VLA'.

Engine failure **before** CORVA: Follow SID to CORVA. Turn RIGHT to VIBIM.

Engine failure **after** CORVA: No restrictions provided that SIDs followed to MSA.

RNAV SIDs - EAST Configuration**RWY 02****GRAUS, LOBAR, MOPAS and OKABI SIDs**

Engine failure **before** BL007: Follow SID to BL007. Turn RIGHT to RULOS.

Engine failure **after** BL007 but **before** BL053 or BL009: Turn LEFT to VLA.

Engine failure **after** BL053 or BL009: No restrictions provided that SIDs followed to MSA.

AGENA, DALIN, DUNES, LARPA, LOTOS, SENIA, and VERSO SIDs and Contingency Departure.

No restrictions provided SID or departure followed to MSA.

RWY07L**GRAUS, LOBAR, MOPAS and OKABI (T SIDs via BL007)**

Engine failure **BEFORE** BL007 - Follow SID to BL007. Turn RIGHT to RULOS.

Engine failure **AFTER** BL007 and **BEFORE** BL053 or BL009 - Turn LEFT to VLA.

Engine failure **AFTER** BL053 or BL009 - No restrictions provided SID followed to MSA.

GRAUS, LOBAR, MOPAS and OKABI (N SIDs via BL042)

Engine failure **BEFORE** BL042 - Follow SID to BL042. Turn RIGHT to RULOS.

Engine failure **AFTER** BL042 - No restrictions provided SIDs followed to MSA.

AGENA, DALIN, DUNES, LARPA, LOTOS, SENIA and VERSO SIDs and Contingency Departure.

No restrictions provided SID or departure followed to MSA.

RWY 07R**GRAUS, LOBAR, MOPAS and OKABI (R SIDs via BL008).**

Engine failure **BEFORE** SUKOS - Follow SID to SUKOS. Turn RIGHT to RULOS.

Engine failure **AFTER** SUKOS and **BEFORE** BL053 or BL009 - Turn LEFT to VLA.

Engine failure **AFTER** BL053 or BL009 - No restrictions provided SIDs followed to MSA.

GRAUS, LOBAR, MOPAS and OKABI (Z SIDs via BL042).

Engine failure **BEFORE** BL042 - Follow SID to BL042. Turn RIGHT to RULOS.

Engine failure **AFTER** BL042 - No restrictions provided SIDs followed to MSA.

AGENA, DALIN, DUNES, LARPA, LOTOS, SENIA and VERSO SIDs and Contingency Departure.

No restrictions provided SID or departure followed to MSA.

Conventional SIDs - West Configuration**RWY 20, 25L, 25R****GRAUS, LOBAR, MOPAS and OKABI SIDs via RILUK or KARDO.**

Engine failure **before** VNV: Follow SID to VNV. Turn LEFT to VIBIM.

Engine failure **after** VNV but **before** RILUK or KARDO: Turn RIGHT to SLL.

Engine failure **after** RILUK or KARDO: No restrictions provided that SIDs followed to MSA.

CLE and VLA SIDs.

Engine failure **before** VNV: Follow SID to VNV. Turn LEFT to VIBIM.

Engine failure **after** VNV: No restrictions provided that SIDs followed to MSA.

RNAV SIDs - West Configuration**RWY 20, 25L****LOBAR, GRAUS, MOPAS and OKABI SIDs**

Engine failure **BEFORE** DOTIS - Follow SID to DOTIS. Turn LEFT to VIBIM.

Engine failure **AFTER** DOTIS and **BEFORE** BL055 or BL056 - Turn immediately RIGHT to SLL.

Engine failure **AFTER** BL055 or BL056 - No restrictions provided SIDs followed to MSA.

AGENA, DALIN, DUNES, LARPA, LOTOS, SENIA and VERSO SIDs and Contingency Departure.

No restrictions provided SIDs or departure followed to MSA.

RWY 25R GRAUS LOBAR MOPAS OKABI SIDs.

Engine failure **BEFORE** GAVMA - Follow SID to GAVMA. Turn LEFT to VIBIM.

Engine failure **AFTER** GAVMA and **BEFORE** BL055 or BL056 - Turn immediately RIGHT to SLL.

Engine failure **AFTER** BL055 or BL056 - No restrictions provided SIDs followed to MSA.

AGENA, DALIN, DUNES, LARPA, LOTOS, SENIA and VERSO SIDs and Contingency Departure.

No restrictions provided SIDs or departure followed to MSA.

MADRID (LEMD)**PERFORMANCE RESTRICTIONS****Noise Abatement (All Runways)**

Comply with the published airfield specific Noise Abatement procedures.

EMERGENCY TURN PROCEDURES**RWY 36L****BARDI, CCS, SIE, VTB1X, VTB1K, ZMR1K, ZMR1N and ZMR1T SIDs.**

Engine failure **BEFORE** BRA 10d on SID track:

- Follow SID to BRA 10d.
- Turn LEFT to GE. Remain within BRA 14d arc until established inbound to GE.

Engine failure **AFTER** BRA 10d on SID track

- No restrictions provided that SID followed to MSA.

ZMR2L and ZMR2X SIDs.

Engine failure **BEFORE** BRA 10d on SID track

- Follow SID to BRA 10d.
- Turn LEFT to GE. Remain within BRA 14d arc until established inbound to GE.

Engine failure **AFTER** BRA 10d and **BEFORE** BRA 17d on SID track

- Turn RIGHT onto track 140M.
- Intercept track 180M to ASBIN for hold and return.

Engine failure **AFTER** BRA 17d

- No restrictions provided that SID followed to MSA.

NANDO, PINAR, RBO, VTB1L, VTB1T, VTB1N SIDs and Contingency Departure.

No restrictions provided that SID or departure followed to MSA.

RWY 36R**BARDI, CCS, SIE and ZMR SIDs**

Engine failure **BEFORE** BRA 10d on SID track

- Follow SID to BRA 10d.
- Turn RIGHT onto track 140M.
- Intercept track 180M to ASBIN for hold and return.

Engine failure **AFTER** BRA 10d on SID track

- No restrictions provided that SID followed to MSA.

NANDO, PINAR, RBO and VTB SIDs

No restrictions provided that SID followed to MSA.

MALAGA (LEMG)

PERFORMANCE RESTRICTIONS

EMERGENCY TURN PROCEDURES

RWY 13

BLN3C, JRZ, SVL and VIBAS2C SIDs.

Engine failure before MLG 9d: Follow SID to MLG 9d. Turn LEFT to XILVI.

Engine failure after MLG 9d: No restrictions provided SID followed to MSA.

BLN3H, NESDA, PEPAS, ROLAS and VIBAS3H SIDs.

Engine failure before GDA 203R 30d: Follow SID to MLG 11d. Turn (immediately if beyond MLG 11d) to XILVI.

Engine failure after GDA 203R 30d: No restrictions provided SID followed to MSA.

INKAL, PEKOP, PIMOS and ULPEP SIDs and Rwy13 Contingency Departure.

No restrictions provided SID or departure followed to MSA.

RWY 30/31

Terrain Clearance and Crosswind Limits.

The RIGHT turn at MLG 2.9d in the following ETPs has been checked for terrain clearance at bank angles and speeds below with SSW winds (180° to 220°) up to 15kts.

15deg up to 170kts

20deg up to 195kts

RWY 13 departure is required if SSW winds (180° to 220°) exceed 15kts.

Thrust Reduction and Acceleration Profile.

Comply with the following thrust reduction and acceleration profile in accordance with FCOM Operational Policy.

THR RED / ACC
3000 / 3000

ENG OUT ACC
1700

BLN, INKAL, JRZ1L/1M, NESDA, PEKOP, PEPAS, ROLAS, SVL2L/2M, ULPEP and VIBAS SIDs.

Engine failure before GM 342° MLG 16d (SID designators T/L or M/U) or GM 099° MLG 11.6d (SID designators S or P):

- Follow MLG 313R to MLG 2.9d.
- Turn RIGHT (immediately if beyond MLG 2.9d) to track 155°M.
- Intercept track 107°M to PISAV.

Engine failure after GM 342° MLG 16d (SID designators T/L or M/U) or GM 099° MLG 11.6d (SID designators S or P):

- No restrictions provided SID followed to MSA.

Continued on page LEMG-ETP-2

JRZ1S/2P, PIMOS and SVL2S/3P SIDs.

Engine failure before crossing track 107°M to PISAV:

- Follow MLG 313R to MLG 2.9d.
- Turn RIGHT (immediately if beyond MLG 2.9d) to track 155°M.
- Intercept track 107°M to PISAV.

Engine failure after crossing track 107°M to PISAV:

- No restrictions provided SID followed to MSA.

RWY 30/31 Contingency Departures (Ref LIDO SIDPT).

Engine failure before 5800ft QNH:

- Follow track 313°M to 500ft QNH.
- Turn RIGHT (immediately if above 500ft QNH) to track 155°M.
- Intercept track 107°M to PISAV.

Engine failure after 5800ft QNH:

- No restrictions provided departure followed to MSA.

PALMA de MALLORCA (LEPA)

EMERGENCY TURN PROCEDURES

RWY 06L and RWY 06R

ISTER, MEROS, MORSS and TONIS SIDs

Engine failure before JOA 8d:

- Follow SID to JOA 8d.
- Intercept JOA 061R outbound to MSA.

Engine failure after JOA 8d:

- No restrictions provided that SID followed to MSA.

BAVER3B/3G, CDP, MEBUT, NELUX and OSGAL SIDs

Engine failure before JOA 8.5d:

- Follow SID to JOA 2.5d.
- Intercept JOA 061R outbound to MSA (If beyond JOA 2.5d turn left immediately to intercept JOA 061R).

Engine failure after JOA 8.5d:

- No restrictions provided that SID followed to MSA.

BAVER2S/2T, DRAGO, EPAMA, ESPOR and GALAT SIDs

Engine failure before JOA 8d:

- Follow SID to JOA 8d.
- Intercept JOA 061R outbound to MSA.

Engine failure after JOA 8d and before PETAM:

- Follow SID to PETAM.
- Turn LEFT to ADX.

Engine failure after PETAM:

- No restrictions provided that SID followed to MSA.

Contingency Departures

No restrictions provided that departure followed to MSA.

RWY 24L/R

DRAGO, ESPOR, GALAT SIDs

Engine failure before BAKAX:

- Follow SID to BAKAX.
- Maintain JOA 237R outbound to MSA.

Engine failure after BAKAX:

- No restrictions provided that SID followed to MSA.

**BAKAX, BAVER, EPAMA, ISTER, MEBUT, MEROS, MORSS, OSGAL, PTC SIDs and
Contingency Departures**

No restrictions provided that SID or departure followed to MSA.

SANTIAGO (LEST)**EMERGENCY TURN PROCEDURES****RWY 17****FORNO, KORAV, MEGAT and ROXER SIDs**

Engine failure before VOR/DME STG 5D:

- Follow SID to STG 5D
- Turn left to STG for hold and return.

Engine failure after VOR/DME STG 5D:

- No restrictions provided SID followed.

DEMOS SID

Engine failure before VOR/DME STG 7D:

- Follow SID to STG 7D
- Turn left to STG for hold and return.

Engine failure after VOR/DME STG 7D:

- No restrictions provided SID followed.

CONTINGENCY SID

Engine failure below 3500ft QNH:

- Climb on RWY heading to accel alt
- Turn left (if above accel alt turn left immediately) onto TRK 350 deg
- Contact ATC for return.

Engine failure above 3500ft QNH:

- No restrictions provided SID followed.

RWY 35**DEMOS, FORNO, KORAV, MEGAT and ROXER SIDs**

Engine failure before VOR/DME STG 2.6D:

- Follow SID to VOR/DME STG 2.6D
- Turn left to VOR/DME STG for hold and return.

Engine failure after VOR/DME STG 2.6D:

- No restrictions provided SID followed.

CONTINGENCY SID

No restrictions provided SID followed.

VALENCIA (LEVC)

EMERGENCY TURN PROCEDURES

RWY12

ALT, ASTRO, CENTA, MANDY, NARGO, SOPET and TATOS SIDs.

Engine failure before VL006:

- Follow SID to VL006.
- Climb on R124 VLC to MSA.

Engine failure after VL006:

- No restrictions provided SID followed to MSA.

ODSEN and ORVUS SIDs and Contingency Departure.

No restrictions provided SID followed.

RWY30

ALT, ASTRO and NARGO SIDs.

Engine failure before crossing R250 VLC on D7 VLC arc:

- Follow SID and maintain D7 VLC arc to VL004.
- Turn left heading 093 degrees
- Climb to MSA.

Engine failure after crossing R250 VLC:

- No restrictions provided SID followed to MSA.

ODSEN, ORVUS, SOPET and TATOS SIDs via SGO.

Engine failure before crossing R010 VLC on SID track:

- Follow SID to cross R010 VLC.
- Turn right to MULAT for hold and return.

Engine failure after crossing R010 VLC on SID track:

- No restrictions provided SID followed to MSA.

CENTA and MANDY SIDs.

Engine failure before D10 VLC:

- Follow SID to D4 VLC.
- Turn right (if beyond D4 VLC turn right immediately) to intercept track 075 degrees towards SGO.
- Crossing R010 VLC turn right to MULAT for hold and return.

Engine failure after D10 VLC:

- No restrictions provided SID followed to MSA.

ODSEN and ORVUS SIDs via VL004.

No restrictions provided SID followed to MSA.

Contingency Departure

Engine failure below 3000ft amsl:

- Climb on RWY heading to D4 VLC.
- Turn right (if beyond D4 VLC turn right immediately) to heading 090 degrees.
- Climb to MSA.

Engine failure above 3000ft amsl:

- No restrictions on ATC route provided MSA achieved.

BIARRITZ (LFBZ)

EMERGENCY TURN PROCEDURES

Runway Surface

Braking action is liable to be degraded when wet.

RWY 09

DONOS and SSN RNAV SIDs.

Engine failure BEFORE BZ090

- Follow SID to BZ090.
- Track to NDB BZ.
- Turn Left to OSGOT for hold and return.

Engine failure AFTER BZ090

- No restrictions provided SID followed. Ensure that MSA achieved if continuing beyond SID.

DONOS and SSN Conventional SIDs.

Engine failure BEFORE VOR/DME BTZ 1.9D

- Follow SID to BTZ 1.9D.
- Track to NDB BZ.
- Turn left to OSGOT for hold and return.

Engine failure AFTER VOR/DME BTZ 1.9D

- No restrictions provided SID followed. Ensure that MSA achieved if continuing Beyond SID.

BIDAC, MAGEC, SOVOS and VAVIX SIDs.

No restrictions provided SID followed.

RWY 27

DONOS and SSN RNAV SIDs.

Engine failure BEFORE BZ090:

- Follow SID to BZ090.
- Track to NDB BZ.
- Turn Left to OSGOT for hold and return.

Engine failure AFTER BZ090:

- No restrictions provided SID followed. Ensure that MSA achieved if continuing beyond SID.

DONOS and SSN Conventional SIDs.

Engine failure BEFORE VOR/DME BTZ 2.6D

- Follow SID to BTZ 2.6D.
- Turn RIGHT to intercept VOR/DME SSN 035R.
- Contact ATC for return.

Continued on page LFBZ-ETP-2

Engine failure AFTER VOR/DME BTZ 2.6D

- No restrictions provided SID followed. Ensure that MSA achieved if continuing beyond SID.

BIDAC, SOVOS and VAVIX SIDs.

No restrictions provided SID followed.

BASTIA (LFKB)**EMERGENCY TURN PROCEDURES****RWY 16 All Engine Procedures****AKUTI, KERIT, MEGER and SODRI SIDs**

Do not leave BTA on NORTHWEST heading below 5200ft QNH.

AJO6S/2V and LIBLO SIDs

Do not leave BTA or BP on SOUTHWEST heading below 7000ft QNH.

BREMO, GIRAG and MOULE SIDs

No restrictions provided that SID followed.

RWY 16 Engine Out Procedures**AJO6S/2V, AKUTI, KERIT, LIBLO6S/2V, MEGER and SODRI SIDs**

Engine failure before BTA:

- Follow SID to BTA for hold and return.

Engine failure after BTA:

- No restrictions provided SIDs followed and MSA achieved.

LIBLO 6U SID

Engine failure before BP:

- Follow SID to BP for hold and return.

Engine failure after BP:

- No restrictions provided SID followed and MSA achieved.

BREMO, GIRAG and MOULE SIDs

No restrictions provided SID followed.

AJO2Q SID

Not authorised as terrain clearance not assessed.

FIGARI SUD CORSE (LFKF)

EMERGENCY TURN PROCEDURES

RWY 05

AJO3G, BTA3G, CORSI and NEGAT SIDs

Engine failure before FGI 7d: Follow SID to FGI 7d. Maintain FGI 052R to MSA. Turn RIGHT to MASAL.

Engine failure after FGI 7d: No restrictions provided SIDs followed to MSA.

BAGSU Omnidirectional Departure

Engine failure below 4000ft QNH - Continue on track 045 degrees. Climb to MSA.

Engine failure above 4000ft QNH - No restrictions provided SID followed to MSA.

Tempo AJO3T SID

Engine failure before visual turn: Continue on track 047 degrees. Climb to MSA.

Engine failure after visual turn and before D7 GR: Turn LEFT to MASAL.

Engine failure after D7 GR: No restrictions provided SID followed.

Tempo BTA3T SID

No restrictions provided SID followed to MSA.

RWY 23

AJO3N, CORSI, NEGAT and URATO SIDs

Engine failure before FGI 5d: Follow SID to FGI 5d. Maintain climb on FGI 198R to MSA. Turn LEFT to MASAL.

Engine failure after FGI 5d: No restrictions provided SIDs followed to MSA.

BTA3M SID

Engine failure before FGI 6.5d: Follow SID to FGI 6.5d. Maintain FGI 198R to MSA. Turn LEFT to MASAL.

Engine failure after FGI 6.5d and before FGI: Turn to MASAL.

Engine failure after FGI: No restrictions provided SIDs followed to MSA.

GIMSI Omnidirectional Departure

Engine failure before GIMSI - Follow SID to GIMSI. Turn Right to GALDA for hold and return.

Engine failure after GIMSI - No restrictions. Do not fly east of AJO 332R below 9000ft.

Tempo AJO3T SID

Engine failure before D7 GR: Continue to D7 GR. Turn LEFT to MASAL.

Engine failure after D7 GR: No restrictions provided SID followed.

Tempo BTA3T SID

Engine failure before visual turn: Continue on track 218 degrees. Climb to MSA.

Engine failure after visual turn: No restrictions provided SID followed.

RWY 05/23 Take-Off Weights.

RWY 23 take-off weights may be restrictive due to significant obstacles in the take-off cone. Use 'Packs Off' as necessary.

RWY 05 take-off in tailwind conditions may provide higher take-off weights than RWY 23. Advise ATC at the earliest opportunity if required.

LYON SAINT EXUPERY (LFLL)

EMERGENCY TURN PROCEDURES

RWY 17L/R

ALURA, BUSIL, MABES and MOKIP SIDs.

Engine failure before DANBO: Follow SID to DANBO for hold and return.

Engine failure after DANBO: No restrictions provided that SIDs are followed.

BELEP, EB, MURRO and REPSI SIDs.

Engine failure before VNE: Follow SID to VNE for hold and return.

Engine failure after VNE: No restrictions provided that SIDs are followed.

BELUS, RISOR and ROMAM SIDs.

Engine failure before LSE 9d: Follow SID to LSE 9d then turn LEFT to DANBO for hold and return.

Engine failure after LSE 9d: No restrictions provided that SIDs are followed.

RWY 35L/R

ALURA, BUSIL, MABES and MOKIP SIDs.

Engine failure before DANBO: Follow SID to DANBO then turn RIGHT towards LTP and contact ATC for return.

Engine failure after DANBO: No restrictions provided that SIDs are followed.

MURRO SID.

Engine failure before LSE 7.3d: Follow SID to LSE 7.3d then turn RIGHT towards LTP and contact ATC for return.

Engine failure after LSE 7.3d: No restrictions provided that SIDs are followed.

BELEP, EB, MURRO and REPSI RNAV SIDs.

Engine failure before LL361: Follow SID to LL361 then turn RIGHT towards LTP and contact ATC for return.

Engine failure after LL361: No restrictions provided that SIDs are followed.

BELUS and RISOR SIDs.

Engine failure before LTP 328R 19.3d: Follow SID to intercept and follow LTP 328R towards LTP. Contact ATC for return.

Engine failure after LTP 328R 19.3d: No restrictions provided that SIDs are followed.

ROMAM SID.

No restrictions provided that SID is followed.

Note: SIDs have been checked for terrain clearance. ATC required altitudes may not be met. Ensure that the MSA has been achieved if continuing beyond the published SID.

GRENOBLE (LFLS)**EMERGENCY TURN PROCEDURES****RWY 09**

**BELEP, BELUS, DANBO, EB, MOKIP, MURRO, PIRUV, REPSI, RISOR, ROMAM, SOPLO and WS
SIDs.**

Engine failure before EG: Follow SID to EG. Turn LEFT to WS for hold and return. Do not accelerate or clean up until LEFT turn complete.

Engine failure after EG: No restrictions provided SIDs followed to MSA.

MARSEILLE PROVENCE (LFML)

EMERGENCY TURN PROCEDURES

RWY 13L/R

ETREK, LERGA and MTL SIDs.

Engine failure BEFORE initial turn: Climb on RWY track to MS. Turn RIGHT to intercept R229 MRM. Climb to MSA.

Engine failure AFTER initial turn and BEFORE VENTA: Follow SID to VENTA. Contact ATC for return.

Engine failure AFTER VENTA: No restrictions provided SID followed.

LUC and NASIK SIDs.

Engine failure BEFORE initial turn: Climb on RWY track to MS. Turn RIGHT to intercept R229 MRM. Climb to MSA.

Engine failure AFTER initial turn and BEFORE VOR/DME MTG 15d on SID track: Follow SID to MTG 12d. Turn LEFT (if beyond MTG 12d turn LEFT immediately) to VENTA. Contact ATC for return.

Engine failure AFTER VOR/DME MTG 15d on SID track: No restrictions provided SID followed.

FJR, MADRA, MAMES, PPG, SOSUR, TINOT and VATIR CONVENTIONAL SIDs.

Engine failure BEFORE ML 2.5d (RWY 13L) or MCE 2d (RWY 13R) on MJ 146deg QDR: Climb straight ahead to MS. Turn RIGHT to intercept R229 MRM. Climb to MSA.

Engine failure AFTER ML 2.5d (RWY 13L) or MCE 2d (RWY 13R) on MJ 146deg QDR: No restrictions provided SID followed.

FJR, MAMES, PPG, SOSUR, TINOT and VATIR RNAV SIDs.

Engine failure BEFORE ML382: Climb straight ahead to ML382. Turn RIGHT to NATEG. Climb to MSA.

Engine failure AFTER ML382: No restrictions provided SID followed.

RWY 31L/R

LUC and NASIK 5C/5N SIDs.

Engine failure BEFORE waypoint VELLO: Follow SID to VELLO. Turn LEFT to VENTA for hold and return.

Engine failure AFTER waypoint VELLO: No restrictions provided SID followed.

LUC and NASIK 5U SIDs.

Engine failure BELOW 5000ft: Climb on RWY heading to ML312. Turn RIGHT to AVN. Climb to MSA.

Engine failure ABOVE 5000ft: No restrictions provided SID followed.

FJR, ETREK, LERGA, MAMES, MTG, MTL, PPG, SOSUR, TINOT and VATIR SIDs.

No restrictions provided SID followed.

NICE COTE D'AZUR (LFMN)

NOISE ABATEMENT PROCEDURES - All Runways.

Early turns at 420ft QNH (RWY 04L/R) and 520ft QNH (RWY 22L/R) are approved consistent with safe operation of the aircraft.

EMERGENCY TURN PROCEDURES (ETPs)

RWY 04L/R

BADOD, BODRU, IRMAR, OKTET and PERUS SIDs via L.BCN NC.

Engine failure below 420ft: Follow SID on track 043°M to the earlier of 420ft QNH or NIZ 183R. Turn RIGHT onto track 180°M. Climb to MSA then turn LEFT to NERAS.

Engine failure above 420ft and before AMIRO or BARSO: Follow SID. When practical, turn onto track 180°M (if beyond NC turn immediately). Climb to MSA then turn LEFT to NERAS.

Engine failure after AMIRO or BARSO: No restriction if MSA achieved or SIDs followed.

BADOD, IRMAR and OKTET SIDs via VOR/DME NIZ.

Engine failure below 420ft: Follow SID on track 043°M to the earlier of 420ft QNH or NIZ 183R. Turn RIGHT onto track 180°M. Climb to MSA then turn LEFT to NERAS.

Engine failure above 420ft and before NIZ: Follow SID. When practical, turn onto track 180°M (if beyond MN052 or CGS 14d turn immediately). Climb to MSA then turn LEFT to NERAS.

Engine failure after NIZ: No restriction if MSA achieved or SIDs followed.

BASIP, EPOLO, LANKO, LONSU, RUBAS, RUBIT, SODRI, TURIL and VAREK SIDs.

Engine failure below 420ft: Follow SID on track 043°M to the earlier of 420ft QNH or NIZ 183R. Turn RIGHT onto track 180°M. Climb to MSA then turn LEFT to NERAS.

Engine failure above 420ft: No restriction if MSA achieved or SIDs followed.

RWY 22L/R

BADOD, BODRU, IRMAR, OKTET & PERUS SIDs via, L.BCN CSC or MN226.

Engine failure below 520ft or before MN222/MN221: Follow SID to MN222/MN221 or AZR 2.3d then turn LEFT onto track 150°M. Climb to MSA then turn LEFT to NERAS.

Engine failure above 520ft or after MN222/MN221 and before AMIRO or BARSO: Follow SID. When practical, turn onto track 150°M (if beyond CSC or MN226 turn immediately). Climb to MSA then turn LEFT to NERAS.

Engine failure after AMIRO or BARSO: No restriction if MSA achieved or SIDs followed.

BADOD, IRMAR and OKTET SIDs via VOR/DME NIZ.

Engine failure below 520ft or before MN222/MN221: Follow SID to MN222/MN221 or AZR 2.3d then turn LEFT onto track 150°M. Climb to MSA then turn LEFT to NERAS.

Engine failure above 520ft or after MN222/MN221 and before NIZ: Follow SID. When practical, turn onto track 150°M (if beyond CGS 13d or MN248 turn immediately). Climb to MSA then turn LEFT to NERAS.

Engine failure after NIZ: No restriction if MSA achieved or SIDs followed.

EPOLO, LANKO, LONSU, RUBAS, RUBIT, SODRI, TURIL & VAREK SIDs.

Engine failure below 520ft or before MN222/MN221: Follow SID to MN222/MN221 or AZR 2.3d then turn LEFT onto track 150°M. Climb to MSA then turn LEFT to NERAS.

Engine failure above 520ft or after MN222/MN221: No restriction if MSA achieved or SIDs followed.

MONTPELLIER MEDITERRANEE (LFMT)**EMERGENCY TURN PROCEDURES (ETPs)****RWY 12L****BRUSC, MASAM and MEN SIDs**

Engine failure BEFORE VOR/DME FJR 10D on SID track - Turn onto southerly heading and contact ATC for return.

Engine failure AFTER VOR/DME FJR 10D on SID track – No restrictions provided SID followed.

KELAM, MARRI, NG and PPG SIDs

No restrictions provided SID followed.

RWY 30R**BRUSC, MASAM and MEN SIDs**

Engine failure BEFORE VOR/DME FJR 10D on SID track - Turn onto southerly heading and contact ATC for return.

Engine failure AFTER VOR/DME FJR 10D on SID track – No restrictions provided SID followed.

ETREK, KELAM, MARRI, MTL, NG and PPG SIDs

No restrictions provided SID followed.

BALE MULHOUSE (LFSB)

EMERGENCY TURN PROCEDURES (ETPs)

RWY 08

Continue ahead to VOR/DME BLM 130R then turn left to ALTIK for hold and return.

RWY 15

Thrust Reduction and Acceleration Profile.

In order to achieve accurate track keeping in the initial right turn, comply with the following thrust reduction and acceleration profile:

THR RED / ACC

2400 / 3900

ELBEG7S and LASAT SIDs.

Engine failure BEFORE BN - Climb on RWY TRK to 1300ft QNH. Turn RIGHT (If above 1300ft turn RIGHT immediately) to TRK 330M. INTCPT R272 BLM to ALTIK for hold and return.

Engine failure AFTER BN - No restrictions provided SID followed.

ELBEG6Y SID

Engine failure BEFORE BLM - Climb on RWY TRK to 1300ft QNH. Turn RIGHT (If above 1300ft turn RIGHT immediately) to TRK 330M. INTCPT R272 BLM to ALTIK for hold and return.

Engine failure AFTER BLM - No restrictions provided SID followed.

LUMEL, MOROK, OL BEN and TORPA SIDs.

Engine failure BELOW 3500FT QNH - Climb on RWY TRK to 1300ft QNH. Turn RIGHT (If above 1300ft turn RIGHT immediately) to TRK 330M. INTCPT BLM R272 to ALTIK for hold and return.

Engine failure ABOVE 3500FT QNH - No restrictions provided SID followed.

RWY 26

HOC, ELBEG6Q, GTQ6Q, and STR6Q SIDs.

Engine failure before VOR/DME BLM 200R: Follow SID to BLM 200R then turn RIGHT to ALTIK for hold and return.

Engine failure after VOR/DME BLM 200R: No restrictions provided that SIDs followed.

BASUD, LUMEL, ELBEG6M, GTQ6M and STR6M SIDs.

Engine failure BEFORE VOR/DME 'BLM' 225R: Follow SID to 'BLM' 225R then turn RIGHT to ALTIK for hold and return.

Engine failure after VOR/DME BLM 225R: No restrictions provided that SIDs followed.

RWY 33

LASAT SID.

Engine failure BEFORE DELUG - Follow SID to BN. Turn LEFT (If beyond BN turn left immediately) to ALTIK for hold and return.

Engine failure AFTER DELUG - No restrictions provided SID followed.

ELBEG SIDs.

Engine failure BEFORE VOR/DME BLM 3.5D - Follow SID to BLM and maintain TRK 333M to NDB BN. Turn LEFT (If beyond BN turn left immediately) to ALTIK for hold and return.

Engine failure AFTER VOR/DME BLM 3.5D - No restrictions provided SID followed.

OLBEN SID.

Engine failure BEFORE SB703 - Follow SID to BN. Turn LEFT to ALTIK for hold and return. If beyond BN continue on SID to SB703. Turn RIGHT to ALTIK for hold and return.

Engine failure AFTER SB703 - No restrictions provided SID followed.

LUMEL MOROK and TORPA SIDs.

Engine failure BEFORE NDB BN – Follow SID to BN. Turn LEFT to ALTIK for hold.

Engine failure AFTER NDB BN and BELOW 3500ft - Turn RIGHT to ALTIK for hold.

Engine failure ABOVE 3500ft - No restrictions provided SID followed.

Note: The SIDs and ALTIK hold have been checked for terrain clearance but ATC required altitudes may not be met. Ensure the MSA is achieved before continuing beyond the SID.

ATHENS(ATH/LGAV)

PERFORMANCE RESTRICTIONS

EMERGENCY TURN PROCEDURE – RWY 03L

ABLON ASTOV GENDO KEA KEPIR NEMES NEVRA OMIRO PIKAD RILIN RIMAX SOREV VARIX and VELOP SIDs.

Engine failure BEFORE VOR/DME SAT 11d: Follow SID to SAT 11d then turn RIGHT to VOR/DME KEA for hold and return. Engine failure AFTER VOR/DME SAT 11d: No restrictions provided that SIDs followed.

ABLON ASTOV GENDO KEA KEPIR NEMES NEVRA OMIRO PIKAD RILIN RIMAX SOREV VARIX and VELOP SIDs

Engine failure before VOR/DME SPA 9d - follow SID to SPA 9d then turn RIGHT to VOR/DME KEA for hold and return. Engine failure after VOR/DME SPA 9d - no restrictions provided SIDs followed.

SOREV and VARIX SIDS VIA VOR/DME ATV 15d arc.

No restrictions provided SIDs followed.

EMERGENCY TURN PROCEDURE – RWY 03R

ABLON ASTOV ATV BIBEX GENDO GERMI KEA KEPIR KRO MANOK NEMES NEVRA OMIRO PIKAD RILIN RIMAX SOREV VARIX and VELOP SIDs via VOR/DME SAT 10d or VOR/DME SAT 11d or OR/DME SPA 12d.

Engine failure BEFORE VOR/DME SAT 10d - follow SID to SAT 10d then turn RIGHT to VOR/DME KEA for hold and return.

Engine failure AFTER VOR/DME SAT 10d - no restrictions provided SIDs followed.

ABLON ASTOV BIBEX GENDO KEA KEPIR NEMES NEVRA PIKAD RILIN RIMAX SOREV VARIX and VELOP SIDS via VOR/DME KRO 266R.

Engine failure BEFORE VOR/DME KRO 266R 14d - turn RIGHT (not before VOR/DME SAT 6d) to VOR/DME KEA for hold and return.

Engine failure AFTER VOR/DME KRO 266R 14d - no restrictions provided SIDs followed.

EMERGENCY TURN PROCEDURE – RWY 21L

OMIRO SID

Engine failure before VOR/DME SPA 9d - follow SID to SPA 9d then turn LEFT to VOR/DME KEA for hold and return.

Engine failure after VOR/DME SPA 9d - no restrictions provided SIDs followed.

ABLON ASTOV BIBEX GENDO KEA KEPIR NEMES NEVRA PIKAD RILIN RIMAX SOREV VARIX and VELOP SIDs

Engine failure before 4000ft QNH - follow VOR/DME SPA 205R to SPA 15d then turn LEFT to VOR/DME KEA For hold and return.

Engine failure after 4000ft QNH - no restrictions provided SIDs followed.

EMERGENCY TURN PROCEDURE – RWY 21R**ASTOV NEMES and VELOP SIDs**

Engine failure before 5000ft QNH - follow VOR/DME SAT 221R to SAT 15d then turn RIGHT to NDB EGN for hold and return.

Engine failure after 5000ft QNH – no restrictions provided SIDs followed.

ABLON GENDO KEA KEPIR NEVRA OMIRO PIKAD RILIN RIMAX SOREV and VARIX SIDs

Engine failure before VOR/DME SAT 9d - follow SID to SAT 9d then turn RIGHT to NDB EGN for hold and return.

Engine failure after VOR/DME SAT 9d - no restrictions provided SIDs followed.

IRAKLION (LGIR)

EMERGENCY TURN PROCEDURES (ETPs)

RWY 09

BAVES, DELAV, EPALO, LABUX, NAVUS, SIT1E and XAVIS SIDs.

Engine failure BELOW 1000ft QNH - Climb ahead and turn LEFT onto heading 045 degrees, no later than VOR/DME IRA 3D or NDB HER 3D. Contact ATC for return.

Engine failure ABOVE 1000ft QNH - No restrictions provided SID followed.

SIT2H SID

Engine failure BEFORE VOR/DME IRA 4D - Climb ahead and turn LEFT onto heading 045 degrees, no later than VOR/DME IRA 4D. Contact ATC for return.

Engine failure AFTER VOR/DME IRA 4D - No restrictions provided SID followed.

OTREX SIDs

Engine failure BELOW 6000ft amsl - Follow SID to D3 IRA. Turn to GONSO for hold and return.

Engine failure ABOVE 6000ft amsl - No restrictions provided SID followed to MSA. Do not proceed beyond IRA if SID altitude constraint not achieved.

Note: ATC altitudes may not be met. Ensure MSA achieved if continuing beyond SID.

RWY 27

BAVES, DELAV, EPALO, LABUX, NAVUS, SIT and XAVIS SIDs.

Engine failure BELOW 600ft QNH - Climb ahead and turn RIGHT onto heading 350 degrees, no later than VOR/DME IRA 3D or NDB HER 3D. Contact ATC for return.

Engine failure ABOVE 600ft QNH - No restrictions provided SID followed.

OTREX SIDs

Engine failure BELOW 6000ft amsl - Follow SID to D10 IRA. Turn to ADORI for hold and return.

Engine failure ABOVE 6000ft amsl - No restrictions provided SID followed to MSA. Do not proceed beyond IRA if SID altitude constraint not achieved.

Note: ATC altitudes may not be met. Ensure MSA achieved if continuing beyond SID.

KEFALLINIA ANNA POLLATOU (LGKF)**EMERGENCY TURN PROCEDURES (ETPs)****RWY 14****ARA1L, GARTA, KFN and ROTSA SIDs**

Engine failure BEFORE KFN - Follow SID to KFN for hold.

Engine failure AFTER KFN - No restrictions provided SID followed to MSA.

ARA3K SID

No restrictions provided SID followed to MSA.

RWY 32**LATAN and RUTOM SIDs.**

Engine failure BEFORE KFN 4D - Turn LEFT to AKETO and climb to MSA.

Engine failure AFTER KFN 4D - No restrictions provided SID followed to MSA.

ARA, GARTA and ROTSA SIDs via D19 KFN Arc.

Engine failure BEFORE KFN 4D - Turn LEFT to AKETO and climb to MSA.

Engine failure AFTER KFN 4D but BEFORE D10 KFN - Climb on KFN R321 to D10 KFN. Turn LEFT to KFN for hold.

Engine failure AFTER D10 KFN - No restrictions provided SID followed to MSA.

ARA GARTA KFN and ROTSA SIDs via VOR/DME KFN.

Engine failure BEFORE KFN 4D - Turn LEFT to AKETO and climb to MSA.

Engine failure AFTER KFN 4D but BEFORE VOR/DME KFN - Follow SID to KFN for hold.

Engine failure AFTER KFN - No restrictions provided SID followed to MSA.

KALAMATA (LGKL)**EMERGENCY TURN PROCEDURES (ETPs)****RWY 17R****RESPA and TRL SIDs**

Engine failure BEFORE KAM:

- Follow SID to KAM
- Join KAM hold. Climb to MSA
- Contact ATC for return.

Engine failure AFTER KAM:

- No restrictions provided SID followed to MSA.

ETILI 1C and SOKRI 1M SIDs

Engine failure BEFORE 27d KAM:

- Climb on heading 165M
- If beyond initial turn at 600ft, turn RIGHT and climb on heading 180M
- Climb to MSA and contact ATC for return.

Engine failure AFTER 27d KAM:

- No restrictions provided SID followed to MSA.

ETILI 1B and SOKRI 1N SIDs

No restrictions provided SID followed to MSA.

RWY 35L**ETILI, RESPA and TRL SIDs**

Engine failure BELOW 5000ft:

- Follow SID to 11d KAM.
- Turn LEFT direct to RESPA
- If beyond 11d KAM turn immediately to RESPA
- Climb to MSA and contact ATC for return

Engine failure ABOVE 5000ft:

- No restrictions provided SID followed to MSA.

KOS IPPOKRATIS (LGKO)

EMERGENCY TURN PROCEDURES (ETPs)

Rwy14

Visual Departures to KOPAR, LARKI and GILOS SIDs.

These procedures are NOT authorised for BAV use.

GILOS and KOPAR3C SIDs.

Engine failure before KOS 145R 12d: Follow SID and maintain KOS 145R to KOS 14d then turn RIGHT to follow KOS 15d arc. Intercept KOS 204R inbound to KOS for hold and return.

Engine failure after KOS 145R 12d: No restriction provided that SIDs followed.

KOPAR3B, LARKI and RDS SIDs.

No restriction provided that SIDs followed.

Rwy32

Visual Departures to KOPAR, GILOS and USINI SIDs.

These procedures are NOT authorised for BAV use.

GILOS1A and USINI2A SIDs.

Engine failure before 1000ft QNH: Turn LEFT to intercept KOS 299R. Climb to MSA and contact ATC for return.

Engine failure after 1000ft QNH: No restriction provided that SIDs followed.

GILOS1D and USINI2D SIDs.

Engine failure before KOS 10d: Follow SID to KOS 4d then turn LEFT (if beyond KOS 4d turn LEFT immediately) to intercept KOS 299R. Climb to MSA and contact ATC for return.

Engine failure after KOS 10d: No restriction provided that SIDs followed.

KOPAR and LARKI SIDs.

No restriction provided that SIDs followed.

KERKIRA CORFU (LGKR)

RWY 16/34 Bearing strength restrictions

The published PCN for Rwy 16/34 is 33/F/B/X/U, however BA have authorisation from the Greek CAA to operate Airbus A320 family aircraft up to MTOW.

EMERGENCY TURN PROCEDURES

RWY 16

IDIMI, LATAN, MALED, NIKRO, OLGAT, PARAX, PARNA, RIPID, TIGRA and VARDI SIDs

Engine failure BELOW 4000ft QNH –

- Climb on RWY track to GAR 3d.
- Turn Left to KRK hold (If beyond GAR 3d turn immediately to KRK).

Engine failure ABOVE 4000ft QNH –

- No restrictions provided SID followed to MSA.

RWY 34

IDIMI, LATAN, MALED, NIKRO, OLGAT, PARAX, PARNA, RIPID, TIGRA and VARDI (F/G/L DEPs)

Engine failure BEFORE GAR 2d –

- Climb on RWY track to GAR 3d.
- Turn Right to KRK hold.

Engine failure AFTER GAR 2d but BELOW 4500ft –

- Turn to heading 265 degrees.
- Climb to MSA.

Engine failure ABOVE 4500ft –

- No restrictions provided SID followed to MSA.

IDIMI, LATAN, MALED, NIKRO, OLGAT, PARAX, PARNA, RIPID, TIGRA and VARDI (Visual DEPs)

Engine failure BELOW 4000ft –

- Follow visual DEP routing to KRK hold.

Engine failure ABOVE 4000ft –

- No restrictions provided DEP route followed to MSA.

LIMNOS IFAISTOS (LGLM)**EMERGENCY TURN PROCEDURES****Rwy04R****ALX KPL KOROS MES NILVA and PEREN SIDs**

No restrictions provided SIDs followed to MSA

Rwy22L**ALX KPL KOROS MES NILVA and PEREN SIDs**

No restrictions provided SIDs followed to MSA.

MIKONOS (LGMK)**PERFORMANCE RESTRICTIONS****Rwy 16/34 Bearing strength restrictions**

The published PCN for Rwy 16/34 is 34/F/B/X/U, however BAV have authorisation from the Greek CAA to operate A320-200 aircraft up to a maximum takeoff weight of 73,500kg.

EMERGENCY TURN PROCEDURES**RWY 16****DIDIS, LETSO, NITSA, PEROK, PIDAX, VARIX SIDs**

No restrictions provided SID followed to MSA.

RWY 34**DIDIS, LETSO, NITSA, PEROK, PIDAX and VARIX SIDs**

Comply with the following thrust reduction & acceleration profile:

THR RED / ACC / ENG OUT ACC

1380 / 3000 / 3000

Engine failure BEFORE MKN 4d:

- Climb on Rwy track to 500ft QNH.
- Turn LEFT (15deg AOB) onto heading 300M. (If above 500ft QNH turn LEFT IMMEDIATELY).
- At 4d MKN turn LEFT and intcpt R249 MKN to VARIX.
- Climb to MSA.

Engine failure AFTER MKN 4d:

- No restrictions provided SID followed to MSA.

PREVEZA AKTION (LGPZ)**EMERGENCY TURN PROCEDURES****Rwy 07L****GARTA, KFN, MALED, RIPID and SOTEG SIDs**

Engine failure BELOW 3000ft:

- Climb on runway heading.
- At 8d AKT or 3000ft QNH (Whichever earlier) turn LEFT to AKT
 - o (If beyond 8d AKT turn LEFT immediately)
- Intercept R256 AKT to 21d AKT hold point.
- Climb to MSA and contact ATC for return.

Engine failure ABOVE 3000ft:

- No restrictions provided SID followed to MSA.

Rwy 25R**GARTA, KFN, MALED and RIPID SIDs**

- No restrictions provided SID followed to MSA.

RHODES DIAGORAS (LGRP)

PERFORMANCE RESTRICTIONS

Local Wind Effects: Refer to warning on LIDO AOI chart.

EMERGENCY TURN PROCEDURES

RWY 06

ROXOL SIDs.

Engine failure before PAR 12d or RDS 12d: Follow SID to PAR or RDS.

Engine failure after PAR 12d or RDS 12d: No restrictions provided SIDs followed to MSA.

ASIMI, BANRO, IRBAX, LAKAD, LOKNA, NAVOK, NILAS, ORVIS, PIROX, SOTIV and VANES SIDs.

No restrictions provided SIDs followed to MSA.

RWY 24

ROXOL SIDs.

Engine failure before PAR 10d or RDS 13d: Follow SID to PAR or RDS.

Engine failure after PAR 10d or RDS 13d: No restrictions provided SIDs followed to MSA.

ASIMI, BANRO, IRBAX, LAKAD, LOKNA, NAVOK, NILAS, ORVIS, PIROX, SOTIV and VANES SIDs.

No restrictions provided SIDs followed to MSA.

CHANIA (LGSA)

EMERGENCY TURN PROCEDURES

RWY 11

OTREX, PLH and SOKRI5B SIDs

Engine failure BEFORE SUD - Follow SID to 9D outbound SUD. Turn LEFT onto heading 360 (Turn RIGHT if already inbound SUD). Climb to MSA.

Engine failure AFTER SUD - No restrictions provided SID followed to MSA.

RUSOS2H, RUSOS1T and SOKRI2H SIDs

Engine failure BELOW 2000ft - Follow SID to 9D outbound SUD. Turn LEFT onto heading 360. Climb to MSA.

Engine failure ABOVE 2000ft - No restrictions provided SID followed to MSA.

TIPUS1T SID

Engine failure BEFORE BRG 128 to TIPUS - Follow SID to 11D outbound SUD.

Turn LEFT onto heading 360 (Turn RIGHT if already inbound SUD). Climb to MSA.

Engine failure AFTER established on BRG 128 - No restrictions provided SID followed to MSA.

BAVES, RUSOS2B and SOKRI1T SIDs.

No restrictions provided SID followed.

RWY 29

OTREX, PLH1L, PHL1S and TIPUS1S SIDs

Engine failure BEFORE SUD - Follow SID to 12D outbound SUD. Turn RIGHT onto heading 360 (Turn LEFT if already inbound SUD). Climb to MSA.

Engine failure AFTER SUD - No restrictions provided SID followed to MSA.

PLH1C, SOKRI5A and RUSOS2K SIDs

Engine failure BELOW 3000ft - Follow SID to 12D SUD. Turn RIGHT onto heading 360. Climb to MSA.

Engine failure ABOVE 3000ft - No restrictions provided SID followed to MSA.

BAVES, RUSOS2A, RUSOS1S, SOKRI1S and SOKRI1K SIDs.

No restrictions provided SID followed.

SANTORINI (LGSR)**EMERGENCY TURN PROCEDURES****RWY 33****MADEX SID**

Engine failure BELOW 2500ft:

- Do not proceed beyond 14d SNI.
- Turn RIGHT onto heading 158m.
- Climb to MSA and contact ATC for return.

Engine failure ABOVE 2500ft:

- No restrictions provided SID followed to MSA.

GIVIS, IRBEG, KUPIS, NETIS, SNI and UVRIT SIDs

No restrictions provided SID followed to MSA.

THESSALONIKI MAKEDONIA (LGTS)

EMERGENCY TURN PROCEDURES

RWY 16

ALIKO, ARNAS, EDASI, FISKA, LOPOS and ODIKO SIDs.

Engine failure before MKR 10d: Follow SID to MKR. Intercept MKR 230R to MKR 10d. Turn LEFT to heading 150°M. Climb to MSA.

Engine failure after MKR 10d: No restriction provided that SIDs followed and MSA assured.

LEKPO and TSL SIDs.

No restriction provided that SIDs followed.

RWY 34

ALIKO, ARNAS, EDASI, FISKA, LEKPO, LOPOS, ODIKO and OSMOS SIDs

Engine failure before MKR 10d: Follow SID towards MKR 10d. Turn LEFT to intercept MKR 10d arc. When crossing MKR 230R turn onto heading 150°M. Climb to MSA.

Engine failure after MKR 10d: No restriction provided that SIDs followed and MSA achieved..

TSL SID.

No restriction provided that SID followed.

ZAKYNTHOS (LGZA)**EMERGENCY TURN PROCEDURES****RWY 34****ENESI1D SID**

Engine failure BEFORE D7 ZAK - Climb on runway track to D12 ZAK. Turn LEFT to intercept R122 KFN to KFN. Climb to MSA.

Engine failure AFTER D7 ZAK - No restrictions provided SID followed to MSA.

ARA, ENESI1L, KFN and OSDES SIDs

No restrictions provided SID followed to MSA.

BUDAPEST LISZT FERENC (LHBP)**EMERGENCY TURN PROCEDURES****RWY 31L & 31R****BADOV LITKU4X and NALAG4X SIDs**

Engine failure BEFORE BP636 - Follow SID to BP640. Turn right (not below 400ft AAL) to HP TPS for hold and return. If beyond BP640 turn right immediately to TPS. Engine failure AFTER BP636 – No restrictions provided SID followed to MSA

ERLOS GILEP LITKU4L NALAG4L NORAH PUSTA and TORNO SIDs

No restrictions provided SID followed to MSA

BARI PALESE (LIBD)**EMERGENCY TURN PROCEDURES****Rwy25****SIDs Based on VOR/DME 'BAR'.****BANAV, DIVKU, TOPNO6B and PERAV5E SIDs.**

Engine failure before BAR 9d: Follow SID to BAR 5d then turn RIGHT (if beyond BAR 5d turn RIGHT immediately) to BAR for hold and return.

Engine failure after BAR 9d: No restrictions provided that SIDs followed.

DOLON, EKMUR5B, FASAN, PISIP5B, TOPNO6E and URENA SIDs.

No restrictions provided that SIDs followed.

SIDs Based on NDB 'BPL'.**BANAV, BRD, DIVKU, DOLON, LUXIL, PISIP5H, TOPNO, URENA and VIE SIDs.**

Engine failure before BPL: Follow SID to BPL then turn RIGHT to BAR for return.

Engine failure after BPL but before BAR 9d: Turn RIGHT immediately to BAR for return.

Engine failure after BAR 9d: No restrictions provided that SIDs followed.

LAMEZIA TERME (LICA)**EMERGENCY TURN PROCEDURES****RWY 10****APVAR, ARBUM, BAGIX, CDC, CRN, DELIK and PEROS SIDs**

Engine failure before LMT 1D - Ahead to LMT 1D past VOR/DME then left 15DEG bank angle turn onto hdg 250M. Intercept and track outbound on the LMT R-270. Do not accelerate until turn is completed.

Engine failure after LMT 1D but below 5000ft (CDC DELIK and F SIDs) or 3500ft (CRN and G SIDs) - Continue on LMT R-98. Contact ATC for return.

Engine failure above 5000ft (DELIK and F SIDs) or 3500ft (CRN and G SIDs) – No restrictions provided SID followed.

RWY 28

CDC SIDs not authorised as terrain clearance not assessed.

CATANIA FONTANAROSSA (LICC)**EMERGENCY TURN PROCEDURES****Rwy08****LIBRO SID.**

Engine failure before INDAX: Follow SID to INDAX for hold and return.

Engine failure after INDAX: No restrictions provided that SID followed.

NELDA SID.

Engine failure before CTF 5d: Maintain CTF 078R to INDAX for hold and return.

Engine failure after CTF 5d: No restrictions provided that SID followed.

ERNAM, PEKOD, PIMOR and RCA SIDs.

No restrictions provided that SIDs followed.

Rwy26**LIBRO and NELDA SIDs.**

Engine failure before CTF 8d: Follow SID to CTF 8d then turn LEFT to CTF for hold and return.

Engine failure after CTF 8d: No restrictions provided that SIDs followed.

ERNAM, PEKOD, PIMOR and RCA SIDs.

No restrictions provided that SIDs followed.

PALERMO PUNTA RAISI (LICJ)**PERFORMANCE RESTRICTIONS****RWY 07/25 Local Wind Effects**

Turbulence can be expected with winds between 090M through south to 200M. RWY 07/25 take-off is not permitted if the limits below are exceeded subject to FCOM crosswind limits.

<u>Wind Direction</u>	<u>Wind Speed (kt)</u>
090 or 190	30
100-110 or 160-180	25
120-150	20
200 thru N to 080	Normal Crosswind Limits

EMERGENCY TURN PROCEDURES**RWY 20****ALL SIDs**

Turn right 15deg at end of runway then at 500ft turn further right to track 360M and climb to 5000ft before returning to NDB PRS.

CAGLIARI ELMAS (LIEE)**EMERGENCY TURN PROCEDURES****RWY 32****LEDRO SID**

Engine failure BEFORE crossing VOR/DME CAG 075R - Follow SID and maintain track 137M to intercept CAG 110R to VOR/DME CAR for hold and return.

Engine failure AFTER crossing VOR/DME CAG 075R - No restrictions provided SID followed to MSA.

CAR and KOVAS SIDs and Contingency Departures.

No restrictions provided SIDs followed to MSA.

OLBIA COSTA SMERALDA (LIEO)

EMERGENCY TURN PROCEDURES

RWY 05

ATNET, BATOX, LABOM, OKIVA, SUTAD and TEREZ RNAV SIDs.

Engine failure BEFORE EO603 - Follow SID to EO603. Maintain heading 054 and contact ATC for return.

Engine failure AFTER EO603 - No restrictions provided SID followed.

BATOX, KOLUS, LABOM, MINKA, OLBEK, POZZO, SUKUN, TEREZ and VAVAX SIDs based on VOR/DME 'SME'.

Engine failure BEFORE VOR/DME 'SME' 10d: Follow SID to 'SME' 10d then maintain 'SME' 054R and contact ATC for return.

Engine failure AFTER VOR/DME 'SME' 10d: No restrictions provided SIDs followed.

BATOX, KOLUS, LABOM, MINKA, OLBEK, POZZO, SUKUN and TEREZ SIDs based on NDB 'SME'.

No restrictions provided SIDs followed.

OLBEK RNAV SID

Not authorised due ATC climb gradient.

RWY 23

ATNET, BATOX, INDIUM, OKIVA, OLBEK, SUKUN, SUTAD and TEREZ RNAV SIDs

Engine failure BEFORE VOR SME 3.0d - at VOR SME 3.3d turn right onto trk235deg. Continue straight ahead.

Engine failure AFTER VOR SME 3.0d - No restrictions provided SID followed.

BATOX, KOLUS, LABOM, MINKA, OLBEK, POZZO, SUKUN, TEREZ and VAVAX SIDs BASED ON VOR/DME SME.

Engine failure BEFORE VOR SME 3.0d - at VOR SME 3.3d turn right onto trk235deg. Continue straight ahead.

Engine failure AFTER VOR SME 3.0d - No restrictions provided SID followed.

LABOM RNAV SID

Not authorised due ATC climb gradient

Note - All RWY 23 SIDs

Crew should accept direct routings from ATC only when above the MSA.

MILAN MALPENSA (LIMC)**EMERGENCY TURN PROCEDURES****RWY 17L/R****BLA, FARAK, NELAB, NOV and SRN SIDs.**

No restrictions provided that SIDs are followed to BLA, FARAK, NOV, NELAB or SRN for hold and return.

ABESI, AOSTA, CANNE and OSKOR Departure Transitions.

In the event of engine failure after BLA, FARAK, NOV, NELAB or SRN terrain clearance is achieved on these Departure Transitions provided that the published ATC altitude at BLA, FARAK, NOV, NELAB or SRN has been achieved.

RWY 35L**BLA, FARAK, NELAB and IRKED SIDs.**

No restrictions provided that SIDs are followed to BLA, FARAK, NELAB or IRKED for hold and return.

ABESI, AOSTA, CANNE and OSKOR Departure Transitions.

In the event of engine failure after BLA, FARAK, NELAB or IRKED, terrain clearance is achieved on these Departure Transitions provided that the published ATC altitude at BLA, FARAK, NELAB or IRKED has been achieved.

RWY 35R**DOGUB, MMP, SRN and TELVA SIDs.**

No restrictions provided that SIDs are followed to DOGUB, MMP, SRN or TELVA for hold and return.

ABESI, AOSTA, CANNE and OSKOR Departure Transitions

In the event of engine failure after DOGUB, MMP, SRN or TELVA, terrain clearance is achieved on these Departure Transitions provided that the published ATC altitude at DOGUB, MMP, SRN or TELVA has been achieved.

BERGAMO ORIO AL SERIO (LIME)**EMERGENCY TURN PROCEDURES****RWY 10****BEG, ORI, TUVIB, TZO AND VAKON SIDs.**

No restrictions provided SID followed.

Crew must ensure altitude requirements at BEG, ORI and TZO are achieved due to high MSA on Transitions (north east and west) to ABESI, ARLES, CANNE, DILEB, OMETO and OSKOR.

Engine failure on Transitions (north, and east and west) to ABESI, ARLES, CANNE, DILEB OMETO and OSKOR - terrain clearance is achieved except as below:

ABESI and CANNE Transitions.

Engine failure BEFORE ADARI - Turn LEFT to intcpt BEG 166R to BEG 12D for hold and return.

Engine failure AFTER ADARI - No restrictions provided Transition followed.

ARLES and OMETO Transitions.

Engine failure BEFORE SRN - Turn LEFT to BEG 166R 12D for hold and return.

Engine failure AFTER SRN - No restrictions provided Transition followed.

ATC altitudes may not be met. Ensure MSA achieved if continuing beyond Transition.

Other SIDs and Transitions not checked.

RWY 28**BEG, ORI, SRN, TUVIB, TZO AND VAKON SIDs.**

No restrictions provided SID followed.

Crew must ensure altitude requirements at BEG, ORI, SRN and TZO are achieved due to high MSA on Transitions (north, east and west) to ABESI, ARLES, CANNE, DILEB, OMETO and OSKOR.

Engine failure on Transitions (north, and east and west) to ABESI, ARLES, CANNE, DILEB, OMETO and OSKOR - terrain clearance is achieved except as below:

ABESI and CANNE Transitions.

Engine failure BEFORE ADARI - Turn LEFT to intcpt BEG 166R to BEG 12D for hold and return.

Engine failure AFTER ADARI - No restrictions provided Transition followed.

ARLES and OMETO Transitions.

Engine failure BEFORE BAVMI or IXORA - Turn LEFT to BEG 166R 12D for hold and return.

Engine failure AFTER BAVMI or IXORA - No restrictions provided Transition followed.

ATC altitudes may not be met. Ensure MSA achieved if continuing beyond Transition.

Other SIDs and Transitions not checked.

TURIN CASELLE (LIMF)**EMERGENCY TURN PROCEDURES****Rwy18****TOP SID.**

No restrictions provided that SID followed to TOP for hold and return.

Crew must ensure the altitude requirement at TOP is achieved due to the high MSAs on the 'SID Transitions (North, East, West and Northwest)' to ABESI, CANNE, IXUSA and KUKEV.

In the event of engine failure on the 'SID Transitions (North, East, West and Northwest)' to ABESI, CANNE, IXUSA and KUKEV terrain clearance is achieved except in circumstances below.

KUKEV Transition.

Engine failure before TOP 16d: Follow 'transition' to TOP 16d then home to CSL for return.

Engine failure after TOP 16d: No restrictions provided that the 'transition' is followed. ATC alts may not be met. Ensure MSA achieved if continuing beyond the SID transition.

All other SIDs and 'SID Transitions' have NOT been checked.

Rwy36**SIRLO and TOP SIDs.**

Engine failure before initial turn at CSL 2d or 2500ft QNH (whichever earlier): Climb ahead to CSL 2d then turn RIGHT onto track 090°M to CSL 10d then turn RIGHT to SIRLO then turn RIGHT to TOP for hold and return.

Engine failure after initial turn at CSL 2d or 2500ft QNH (whichever earlier): No restrictions provided that SIDs followed.

Crew must ensure the altitude requirements at SIRLO and TOP are achieved due to the high MSAs on the 'SID Transitions (North, East, West and Northwest)' to ABESI, CANNE, IXUSA and KUKEV.

In the event of engine failure on the 'SID Transitions (North, East, West and Northwest)' to ABESI, CANNE, IXUSA and KUKEV terrain clearance is achieved except in circumstances below.

KUKEV Transition.

Engine failure before TOP 16d: Follow 'transition' to TOP 16d then home to CSL for return.

Engine failure after TOP 16d: No restrictions provided that the 'transition' is followed.

The specified SIDs and 'SID Transitions' have been checked for terrain clearance. ATC altitudes may not be met. Ensure that the MSA is achieved is continuing beyond the 'SID Transition'.

All other SIDs and 'SID Transitions' have NOT been checked.

GENOA SESTRI (LIMJ)

PERFORMANCE RESTRICTIONS

Local Wind Effects - Rwy10 and Rwy28.

Extreme turbulence may be expected even though the surface wind is not excessive particularly with wind direction from NORTHEAST and EAST. Exercise caution. If turbulence is suspected then do not use reduced thrust for take-off.

Crosswind Limits - Rwy10 and Rwy28.

Local regulations require that the maximum aircraft crosswind limits must be reduced by 30%.

EMERGENCY TURN PROCEDURES

Rwy10

GEN, LAGEN, and UNITA SIDs.

Engine failure before SES 3d: Climb straight ahead to SES 3d then turn RIGHT to intercept SES 183R and follow SID. Note that the early RIGHT turn MUST start at SES 3d.

Engine failure after SES 3d: No restrictions provided that SIDs are followed.

Rwy28

GEN, LAGEN, and UNITA SIDs.

No restrictions provided that SIDs are followed. Note that the early LEFT turn must start at SES 1.5d.

MILAN LINATE (LIML)

EMERGENCY TURN PROCEDURES

RWY 18

MAL and TREVI SIDs.

No restrictions provided that SIDs followed to MAL or TREVI for hold and return.

Crew must ensure altitude requirements at MAL and TREVI are achieved due to high MSAs on 'Departure Transitions (North and Northwest)' to ABESI, ARLES, CANNE, OMETO and OSKOR.

In the event of engine failure on the 'Departure Transitions (North and Northwest)' to ABESI, ARLES, CANNE, OMETO and OSKOR terrain clearance is achieved except in the circumstances below.

ABESI and CANNE Departure Transitions.

Engine failure before ADARI: Turn LEFT to SRN for return.

Engine failure after ADARI: No restrictions provided that 'transition' followed.

ARLES and OMETO Departure Transitions.

Engine failure before BAVMI or IXORA: Turn LEFT to VOG for return.

Engine failure after BAVMI or IXORA: No restrictions provided that 'transition' followed.

RWY 36

SRN and TZO SIDs.

No restrictions provided that SIDs followed to SRN or TZO for hold and return.

Crew must ensure altitude requirements at SRN and TZO are achieved due to high MSAs on the 'Departure Transitions (North and Northwest)' to ABESI, ARLES, CANNE, OMETO and OSKOR.

In the event of an engine failure on these 'Departure Transitions (North and Northwest)' to ABESI, ARLES, CANNE, OMETO and OSKOR, terrain clearance is achieved except in the circumstances below.

ABESI and CANNE Departure Transitions.

Engine failure before ADARI: Turn LEFT to SRN for return. Engine failure after ADARI: No restrictions provided that 'transition' followed.

ARLES and OMETO Departure Transitions.

Engine failure before BAVMI or IXORA: Turn LEFT to VOG for return.

Engine failure after BAVMI or IXORA: No restrictions provided that 'transition' followed.

NIKMO SID.

Engine failure before LIN 5.5d: Turn RIGHT to TZO for hold and return.

Engine failure after LIN 5.5d and before LIN 19d (or ML504): Turn LEFT to SRN for hold and return.

Engine failure after LIN 19d (or ML504): No restrictions provided that SID followed.

Crew must ensure that the altitude requirements at LIN 5.5d (or ML502) and at LIN 14d (or ML503) and at LIN 19d (or ML504) are achieved due to the high MSAs on the 'Departure Transitions' to ABESI and CANNE. If these altitudes cannot be achieved then contact ATC and request a TZO SID.

RUVAB SIDs.

Engine failure before LIN 14d: Follow SID to LIN 4d. Turn RIGHT to TZO (if beyond LIN 4d turn RIGHT immediately to TZO) for hold and return.

Engine failure after LIN 14d: No restrictions provided SID followed.

Specified SIDs and 'Departure Transitions' have been checked for terrain clearance. ATC altitudes may not be met. Other SIDs and 'Departure Transitions' have NOT been checked.

BOLOGNA BORGIO PANIGALE (LIPE)**EMERGENCY TURN PROCEDURES****RWY 12****LOMED5L, LUPOS8L and PELEG6L SIDs**

Engine failure BEFORE crossing VOR/DME BOA - Follow SID to 800ft QNH.

Intercept R047 BOA to D14 BOA. Join MIVBO hold.

Engine failure AFTER crossing VOR/DME BOA - No restrictions if MSA achieved or SID followed.

LOMED5X, PELEG6X and LUPOS7X SIDs

Engine Failure BEFORE PE602 - Follow SID to 800ft QNH. Intercept R047 BOA to D14 BOA. Join MIVBO hold.

Engine Failure AFTER PE602 - No restriction provided SID followed and MSA achieved.

LOMED5Y, LUPOS8H and PELEG6H SIDs

Engine Failure BEFORE PE607 - Follow SID to 800ft QNH. Intercept R047 BOA to D14 BOA. Join MIVBO hold.

Engine failure AFTER PE607 - No restriction provided SID followed and MSA achieved.

BOA and LUMAV SIDs

No restrictions provided SID followed to MSA.

RWY 30**LOMED5V, LUPOS6V and PELEG6V SIDs**

Engine failure BEFORE crossing VOR/DME BOA - Follow SID to D6 BOA. Intercept R047 BOA to D14 BOA. Join MIVBO hold.

Engine failure AFTER VOR/DME BOA - No restrictions if MSA achieved or SID followed.

LUPOS6T SID

Engine failure BEFORE D12 BOA - Follow SID to D6 BOA. Intercept R047 BOA to D14 BOA. Join MIVBO hold.

Engine failure AFTER D12 BOA - No restrictions if MSA achieved or SID followed.

PELEG6Z SID

Engine failure BEFORE PE611 - Follow SID to PE611. Intercept R047 BOA to D14 BOA. Join MIVBO hold.

Engine failure AFTER PE611 - No restrictions provided SID followed and MSA achieved.

LOMED5Z and LUPOS6Z SIDs

Engine failure BEFORE PE612 - Follow SID to PE611. Intercept R047 BOA to D14 BOA. Join MIVBO hold.

Engine failure AFTER PE612 - no restrictions provided SID followed and MSA achieved.

BOA and LUMAV SIDs

No restrictions provided SID followed and MSA achieved.

VENICE TESSERA (LIPZ)**EMERGENCY TURN PROCEDURES****RWY 04L/R****ROKIB5W SID**

Engine failure BEFORE RNAV WAYPT PZ437 - Follow SID to PZ437. Track to CHI for hold and return.

Engine failure AFTER RNAV WAYPT PZ437 - No restriction provided SID followed.

ROKIB6S SID

Engine failure BEFORE PZ483 - Follow SID to PZ483. Track to VOR/DME VIC for hold and return.

Engine failure AFTER PZ483 - No restrictions provided SID followed.

ROKIB6J and ROKIB6X SIDs

Engine failure BEFORE PZ484 - Follow SID to PZ492 (6J SID) or PZ490 (6X SID). Track (if beyond PZ492/PZ490 turn LEFT) to VOR/DME CHI for hold and return.

Engine failure AFTER PZ484 - No restrictions provided SID followed.

AKADO BELOV CHI ROTAR ROSKA and VIC SIDs

No restrictions provided SID followed.

Crew must ensure SID altitude requirements are achieved on BZO, ROKIB and VIC SIDs due to high MSA to north and west of airfield the MSA must be achieved if continuing beyond the SID.

RWY 22L/R**BASOG, CHI, LUMAV, ROSKA, ROTAR and VIC SIDs.**

No restrictions provided that SIDs are followed.

Crew must ensure that SID altitude requirements are achieved on ROKIB and VIC SIDs due to high MSAs to the NORTH and WEST of the airfield. The MSA must be achieved if continuing beyond the SIDs.

NAPLES CAPODICHINO (LIRN)

EMERGENCY TURN PROCEDURES

RWY 06

MOLUX5A, AGNIS, DELER, EDOPA, GALT, ISKIA, MALOG, PEVIR, POLIT, TEA5A and TEA5C SIDs

Engine failure before SOR: Follow SID to SOR for hold. Contact ATC for instructions.

Engine failure after SOR: No restrictions provided SID followed.

TEA8B SID (By ATC).

Engine failure before POM: Follow SID to POM then turn LEFT and follow TEA5A SID routing to SOR for hold. Contact ATC for instructions.

Engine failure after POM but below MSA: Turn LEFT onto heading 270°M and contact ATC for instructions.

MOLUX8B SID (By ATC)

This SID is NOT approved for BAV use.

RWY 24

MOLUX, AGNIS, DELER, EDOPA, GALT, ISKIA, MALOG, PEVIR, POLIT and TEA SIDs

Engine failure before SOR: Follow SID to SOR for hold and contact ATC for instructions.

Engine failure after SOR: No restrictions provided SID followed.

PISA SAN GIUSTO (LIRP)**RWY 04L/R NOISE ABATEMENT**

Comply with published airfield specific noise abatement procedures (Navigraph/Lido AOI).

THR RED / ACC	ENG OUT ACC
1500 / 3000	1000

EMERGENCY TURN PROCEDURES**RWY 04L****ASVOL, GINAR, GOVGO and MAREL SIDs**

Engine failure below 700ft QNH:

- Follow track 035°M to PIS 3d (or PIN with SID MAREL6E).
- Turn LEFT onto track 270°M. Climb to MSA.

Engine failure above 700ft QNH and below 3000ft QNH:

- Turn onto track 270°M to MSA.

Engine failure above 3000ft QNH:

- No restrictions provided that SIDs followed to MSA.

BETEN and SPEZI SIDs

Engine failure below 700ft QNH:

- Follow track 035°M to PIS 3d (or PIN with SID BETEN6E).
- Turn LEFT onto track 270°M to MSA.

Engine failure above 700ft QNH:

- No restrictions provided that SIDs followed to MSA.

BEROK SID

Engine failure below 700ft QNH:

- Follow trk 035°M to PIS 3d.
- Turn LEFT onto trk 270°M to MSA.

Engine failure above 700ft QNH and below PIS 355R 10d:

- Turn LEFT onto trk 270°M to MSA.

Engine failure above PIS 355R 10d:

- No restrictions provided that SID followed to MSA.

RWY 04R**ASVOL, GINAR, GOVGO and MAREL SIDs**

Engine failure before PIS 3d (or 700ft QNH with SID MAREL6E):

- Follow SID to PIS 3d (or PIN with SID MAREL6E).
- Turn LEFT onto track 270°M to MSA.

Engine failure after PIS 3d (or 700ft QNH with SID MAREL6E) and below 3000ft QNH:

- Turn onto track 270°M to MSA.

Engine failure above 3000ft QNH:

- No restrictions provided that SIDs followed to MSA.

BETEN and SPEZI SIDs

Engine failure before PIS 3d (or 700ft QNH with SID BETEN6E):

- Follow SID to PIS 3d (or PIN with SID BETEN6E).
- Turn LEFT onto track 270°M to MSA.

Engine failure after PIS 3d (or 700ft QNH with SID BETEN6E):

- No restrictions provided that SIDs followed to MSA.

BEROK SID

Engine failure before PIS 3d:

- Follow SID to PIS 3d.
- Turn LEFT onto track 270°M to MSA.

Engine failure after PIS 3d and before PIS 355R 10d:

- Turn LEFT onto track 270°M to MSA.

Engine failure after PIS 355R 10d:

- No restrictions provided that SID followed to MSA.

RWY 22L/R**ASVOL, BEROK, GINAR and MAREL SIDs**

Engine failure before PIS 4d:

- Follow SID to PIS 4d.
- Turn RIGHT onto track 270°M to MSA.

Engine failure after PIS 4d:

- No restrictions provided that SIDs followed to MSA.

BETEN, GOVGO and SPEZI SIDs.

No restrictions provided that SIDs followed to MSA.

LJUBLJANA BRINK (LJLJ)**EMERGENCY TURN PROCEDURES****RWY 30****BERTA DOL DARZA SABAD RIFEN GIMIX1W and MODRO SIDs**

Engine failure BEFORE MODRO (11D LBL) - Immediately turn LEFT to DOL for hold and return.

Engine failure AFTER MODRO (11D LBL) - No restrictions provided SID followed to MSA.

ILB SID

Engine failure BEFORE established inbound ILB - Follow SID to intercept 192R LBL. Turn LEFT to DOL for hold and return.

Engine failure AFTER established inbound ILB - No restrictions provided SID followed to MSA.

GIMIX1J and GIMIX1Z SIDs are NOT approved for BAV use as CG not achievable.

RWY 12**ARLON SIDs.**

Engine failure BEFORE MG - Follow SID to MG. Proceed to DOL for hold and return.

Engine failure AFTER MG but BEFORE 010R DOL - Turn immediately to DOL for hold and return.

Engine Failure AFTER 010R DOL - No restrictions provided SID followed to MSA

BERTA SID.

Engine failure BEFORE MG - Follow SID to MG. Proceed to DOL for hold and return.

Engine failure AFTER MG but BEFORE crossing MG on hdg 039M - Follow SID to MG. Turn RIGHT to DOL for hold and return.

Engine failure AFTER crossing MG on hdg 039M - No restrictions provided SIDs followed to MSA.

GIMIX SID

Engine failure BEFORE established on 297R LBL - Follow SID to MG. Proceed to DOL for hold and return. If beyond MG turn immediately to DOL for hold and return.

Engine failure AFTER established on 297R LBL - No restrictions provided SID followed to MSA. Do not proceed beyond GIMIX until onward MSA achieved.

ILB SIDs.

Engine failure BEFORE MG - Follow SID to MG. Proceed to DOL for hold and return.

Engine failure AFTER MG but BEFORE 148R LBL - Turn immediately to DOL for hold and return.

Engine Failure AFTER 148R LBL - No restrictions provided SID followed to MSA.

LUPIX SID.

Engine failure BEFORE LUPIX - Proceed to DOL for hold and return.

Engine failure AFTER LUPIX - No restrictions provided SID followed to MSA.

RIFEN SID

Engine failure BEFORE established on 251R DOL - Follow SID to MG. Proceed to DOL for hold and return. If beyond MG turn immediately LEFT to DOL for hold and return.

Engine failure AFTER established on 251R DOL - No restrictions provided SIDs followed to MSA.

DARZA MAGAM SABAD and VALLU SIDs

Not approved as terrain clearance has not been assessed.

INNSBRUCK (LOWI)**EMERGENCY TURN PROCEDURES****RWY 08****SIDs via NDB RTT**

Engine failure BEFORE OEJ 7.5d:

- Follow SID to OEJ 7.5d.
- Turn LEFT onto track 055°M.
- At 4.4d OEJ turn RIGHT onto heading 238°M to INN.
- At INN turn RIGHT to RUM and follow SID to RTT via LOC/DME OEJ.

Engine failure AFTER OEJ 7.5d:

- No restrictions provided SID followed.

SIDs via NDB INN

Engine failure BEFORE OEJ 7.5d:

- Follow SID to OEJ 7.5d.
- Turn LEFT onto track 055°M.
- At 4.4d OEJ turn RIGHT onto heading 238°M to INN.
- At INN turn RIGHT to RUM.
- At RUM track 066°M to LOC/DME OEJ.
- At OEJ track 064°M to 9500ft AMSL before turning LEFT to RTT for hold and return.

Engine failure AFTER OEJ 7.5d but BEFORE OEJ 4.0d (OEJ for ADILO SIDs):

- Continue on track 066°M to LOC/DME OEJ.
- At OEJ track 064°M to 9500ft AMSL before turning LEFT to RTT for hold and return.

Engine failure AFTER OEJ 4.0d (OEJ for ADILO SIDs) but BEFORE INN:

- Follow SID to INN.
- At INN turn RIGHT to RUM.
- At RUM track 066°M to LOC/DME OEJ.
- At OEJ track 064°M to 9500ft AMSL before turning LEFT to RTT for hold and return.

Engine failure AFTER INN:

- No restrictions provided SID followed.

Notes (All SIDs):

The minimum acceleration altitude is 5000ft QNH. When routing via NDB 'INN' following an engine failure, acceleration must take place only when the aircraft altitude is at least 5000ft QNH and the aircraft is established inbound to OEJ.

All turns have a bank angle requirement of 25deg and have a maximum speed restriction of 154kts IAS.

RWY 26
ADILO, BRENO, KOGOL, OBEDI, RTT 4H, RTT 1R and UNKEN SIDs

Engine failure BEFORE OEV 3.3d:

- At OEV 1.2d turn RIGHT onto track 272°M to OEV 3.3d
- Turn RIGHT to intercept track 286°M from INN to PAT 18.9d
- At PAT 18.9d turn LEFT onto track 074°M to intercept track 106°M to INN.
- Intercept track 066°M to RUM and LOC/DME OEJ.
- At OEJ track 064°M to 9500ft AMSL before turning LEFT to RTT.

Engine failure AFTER OEV 3.3d:

- No restrictions provided that SID followed.

MOGTI 3H SID

Engine failure BEFORE crossing INN 286R:

- Continue on runway track.
- Turn RIGHT to intercept radial 286°M from INN to PAT 18.9d.
- At PAT 18.9d turn LEFT onto track 074°M to intercept track 106°M to INN.
- Intercept track 066°M to RUM and LOC/DME OEJ.
- At OEJ track 064°M to 9500ft AMSL before turning LEFT to RTT.

Engine failure AFTER crossing INN 286R but BEFORE WI507:

- Establish on radial 286°M from INN to PAT 18.9d.
- At PAT 18.9d turn LEFT onto track 074°M to intercept track 106°M to INN.
- Intercept track 066°M to RUM and LOC/DME OEJ.
- At OEJ track 064°M to 9500ft AMSL before turning LEFT to RTT.

Engine failure AFTER WI507:

- No restrictions provided SID followed.

MOGTI 1X and RTT 3X SIDs

SIDs not authorised for BA use.

Notes

1. The minimum engine out acceleration altitude (Aa) is 5000ft QNH but must not take place before the aircraft is established inbound to INN. All turns have a bank angle requirement of 25deg and have a maximum speed restriction of 154kts IAS.
2. The RWY 26 Western Valley Visual departure to VOR/DME KPT is available provided that the ceiling and visibility requirements are met and the minimum acceleration altitude of 11,500ft QNH has been achieved by 'PAT' 18.9d. In the event of engine failure BELOW 11500ft QNH then crew MUST follow the 'MOGTI 2H' ETP above and accelerate only when above 5000ft QNH and established inbound to NDB 'INN'.

SALZBURG (LOWS)

EMERGENCY TURN PROCEDURES

RWY 15

Do not use RWY 15 for takeoff if Westerly wind component exceeds 10kt.

Use CONF 2 only for RWY 15 take-off.

DE TSA, IMRON, NEMAL, RTT, SBG, TITIG, TRAUN and VERDA2B SIDs

Comply with the following thrust reduction and acceleration profile:

THR RED / ACC	ENG OUT ACC
2500 / 5500	5500

In both all engines and engine out case do not accelerate or clean up until turn is completed.

All Engines Operating - Turn LEFT and follow SID at OES 2d or WS643.

One Engine Inoperative - At OES 1.5d turn LEFT to VOR/DME SBG (If beyond OES 1.5d turn LEFT immediately to SBG). Hold at SBG. Climb to MSA.

VERDA2B SID

Not beyond WS626 below 7000ft.

RTT & DE TSA SIDs

Not beyond WS616 below 7000ft.

VERDA1X, VERDA1Y and Special Performance SIDs are not authorised for BAV use.

RWY 33

DE TSA and RTT SIDs

Engine failure BEFORE WS619 - Follow SID to WS619. Turn RIGHT to SBG. Hold at SBG and climb to MSA.

Engine failure AFTER WS619 - No restrictions provided SID followed to MSA.

NEMAL and VERDA SIDs

Engine failure BEFORE WS626 - Follow SID to WS626. Turn LEFT to SBG. Hold at SBG and climb to MSA.

Engine failure AFTER WS626 - No restrictions provided SID followed to MSA.

INROM, SBG, TITIG and TRAUN SIDs

No restrictions provided SID followed to MSA.

VIENNA SCHWECHAT (LOWW)

EMERGENCY TURN PROCEDURES

RWY 11

LUGEM, MEDIX and SOVIL SIDs.

Engine failure before crossing SNU 030R: Follow SID to intercept SNU 030R to SNU.

Engine failure after crossing SNU 030R and before FMD 12d: Turn LEFT to intercept SNU 030R to SNU.

Engine failure after FMD 12d: No restrictions provided SIDs followed to MSA.

IMVOB, IRGOT, OSPEN AND RUPET SIDs.

Engine failure before WW172: Follow SID to heading 247° inbound WW172. Turn direct to SNU for hold.

Engine failure after WW172: No restrictions provided SIDs followed to MSA.

EMKOG, EVMAN, SASAL, SNU and STEIN SIDs.

Engine failure before FMD 5d: Turn LEFT immediately to track 020°M and contact ATC.

Engine failure after FMD 5d: No restrictions provided SIDs followed to MSA.

ODSUD and OSMOD SIDs.

Engine failure before FMD 5d - Turn left immediately to track 020M. Contact ATC for return.

Engine failure after FMD 5D but before FMD 15D - follow SID to SNU and hold.

Engine failure after FMD 15D - no restrictions provided SID followed.

ADAMA, DITIS, KOXER, LANUX, LEDVA and WGM SIDs.

No restrictions provided SIDs followed to MSA.

RWY 16.

LUGEM, MEDIX and SOVIL SIDs.

Engine failure before crossing SNU 030R: Follow SID to intercept SNU 030R to SNU.

Engine failure after crossing SNU 030R and before FMD 12d: Turn LEFT to intercept SNU 030R to SNU.

Engine failure after FMD 12d: No restrictions provided SIDs followed to MSA.

OSPEN AND RUPET SIDs.

Engine failure before WW172: Follow SID to heading 251° inbound WW172. Turn direct to SNU for hold.

Engine failure after WW172: No restrictions provided SIDs followed to MSA.

SASAL, SNU and STEIN SIDs.

Engine failure before FMD 5d: Turn LEFT immediately to track 020°M and contact ATC.

Engine failure after FMD 5d: No restrictions provided SIDs followed to MSA.

ADAMA, DITIS, KOXER, LANUX, LEDVA and WGM SIDs.

No restrictions provided SIDs followed to MSA.

Note: SID tracks and SNU hold have been checked for terrain clearance. ATC altitudes may not be met. Ensure MSA is achieved if continuing beyond the published SID.

RWY 29**DITIS, LANUX, LEDVA, LUGEM, MEDIX and SOVIL SIDs.**

Engine failure before FMD 12d: Turn LEFT to intercept SNU 030R to SNU.

Engine failure after FMD 12d: No restrictions provided SIDs followed to MSA.

EMKOG, EVMAN, EWUKE, IMVOB, IRGOT, ODSUD, OSMOD, OTGAR, UMSUM, UNGUT and VABGU SIDs.

Engine failure before FMD 12d: Follow SID to FMD 12d. Turn to SNU for hold.

Engine failure after FMD 12d: No restrictions provided SIDs followed to MSA.

OSPEN AND RUPET SIDs.

Engine failure before WW172: Follow SID to heading 246° inbound WW172. Turn direct to SNU for hold.

Engine failure after WW172: No restrictions provided SIDs followed to MSA.

ADAMA, AGMIM, ASPIB, KOXER, SASAL, SNU, STEIN and WGM SIDs.

No restrictions provided SIDs followed to MSA.

RWY 34**LUGEM, MEDIX and SOVIL SIDs.**

Engine failure before FMD 12d: Turn LEFT to intercept SNU 030R to SNU.

Engine failure after FMD 12d: No restrictions provided SIDs followed to MSA.

EMKOG, EVMAN, EWUKE, IMVOB, IRGOT, ODSUD, OSMOD and OTGAR SIDs.

Engine failure before FMD 12d: Follow SID to FMD 12d. Turn to SNU for hold.

Engine failure after FMD 12d: No restrictions provided SIDs followed to MSA.

OSPEN AND RUPET SIDs.

Engine failure before WW172: Follow SID to heading 246° inbound WW172. Turn direct to SNU for hold.

Engine failure after WW172: No restrictions provided SIDs followed to MSA.

ADAMA, DITIS, KOXER, LANUX, LEDVA, SASAL, SNU, STEIN and WGM SIDs.

No restrictions provided SIDs followed to MSA.

Note: SID tracks and SNU hold have been checked for terrain clearance. ATC altitudes may not be met. Ensure MSA is achieved if continuing beyond the published SID.

FARO (LPFR)**EMERGENCY TURN PROCEDURES****Rwy 10 (All SIDs)**

Engine Failure BEFORE initial SID turn points - Climb ahead to 1500ft QNH. Turn south and contact ATC for return.

Engine Failure AFTER initial SID turn points - No restrictions provided SID followed.

ATC altitudes may not be met. Ensure MSA achieved if continuing beyond SID.

Rwy 28 (All SIDs)

Engine Failure BEFORE initial SID turn points - Climb ahead to 1500ft QNH. Turn south and contact ATC for return.

Engine Failure AFTER initial SID turn points - No restrictions provided SIDs followed.

ATC altitudes may not be met. Ensure MSA achieved if continuing beyond SID.

MADEIRA FUNCHAL (LPMA)**EMERGENCY TURN PROCEDURES****RWY 05****DEGUN, ELBIM, GOSGA, IRKID, MADAT, NIDUL, ORTIS, SNT, TABOM and XEGEN SIDs**

No restrictions provided SID followed to MSA.

Do not delay initial turn past DER (VOR/DME FUN 3.9D).

RWY 23**DEGUN, ELBIM, GOSGA, IRKID, MADAT, NIDUL, ORTIS, SNT, TABOM and XEGEN SIDs**

No restrictions provided SID followed to MSA.

Do not delay initial turn past DER (VOR/DME FUN 5.2D).

Note: Clearance of coastal terrain has been checked for 15 degree bank angle turns at speeds up
to 185kt.

PORTO SANTO F S CARNEIRO (LPPR)**EMERGENCY TURN PROCEDURES****Rwy 17 (All SIDs)**

No restrictions provided SID followed.

Crew must ensure 3000ft QNH is achieved before turning onto SID.

Rwy35 (All SIDs)

No restrictions provided SID followed.

Crew must ensure 3000ft QNH is achieved before turning onto SID.

LISBON (LPPT)**EMERGENCY TURN PROCEDURES****RWY 35****BUSEN, ESP, FTM, GAIOS, GANSU, IDBID, INBOM, IXIDA, LIGRA, NAKOS, TROIA SIDs:**

Engine failure before 2000ft QNH: Climb ahead to LIS. Turn RIGHT to LAR.

Engine failure after 2000ft QNH: No restrictions provided SIDs followed to MSA.

GENEVA COINTRIN (LSGG)**PERFORMANCE RESTRICTIONS****Noise Abatement RWY 04/22**

Comply with airfield specific noise abatement procedure as detailed in LIDO AOI pages.

EMERGENCY TURN PROCEDURES**RWY 04****ARBOS, BALSİ, BELUS, DEPUL, MEDAM, PAS, ROCCA and SIROD SIDs**

Engine failure before initial turn at 5000ft QNH or 7000ft QNH: Continue ahead to SPR for hold and return.

Engine failure after initial turn at 5000ft QNH or 7000ft QNH: No restrictions provided that SIDs are followed.

MOLUS RNAV SID and SPR SIDs

No restrictions provided that SIDs are followed.

RWY 22**MOLUS RNAV SID, BALSİ, DEPUL, DIPIR, KONIL5A, MEDAM and ROCCA SIDs**

Engine failure before 7000ft QNH: Follow SID to PAS (or KEMIT if in departure climb hold) then turn LEFT to intercept CBY 040R to SPR for return. Refer to note below.

Engine failure after 7000ft QNH: No restrictions provided that SIDs are followed.

Note: Strict adherence to published speed and bank angle restrictions in the LEFT turn at PAS (185kt with 15deg bank angle or 250kt with 25deg bank angle) or KEMIT (210kt with 25deg bank angle) is required to ensure that terrain clearance is achieved.

KONIL RNAV SID and KONIL3D/5C SIDs.

Engine failure before GVA 3d: Intercept and follow GVA 225R to PAS then turn LEFT (maximum 185kt with 15deg bank angle) to intercept CBY 040R to SPR for return.

Engine failure after GVA 3d: No restrictions provided that SIDs are followed. Refer to note below.

Note: Strict adherence to the published speed and bank angle restrictions in the RIGHT turn at GVA 3d (190kt with 25deg bank angle until passing GG603 or until established on track 041°M to GLA) is required to ensure that terrain clearance is achieved. The turn radius at 190kt with 25deg bank angle equates to 150kt with 15deg bank angle up to 40°C.

BELUS SID is NOT approved for BAV operation.

SID tracks and hold patterns at KEMIT and SPR have been checked for terrain clearance.

ATC required altitudes may not be met. Crew must ensure that the MSA has been achieved if continuing beyond the published SID.

ZURICH (LSZH)

PERFORMANCE RESTRICTIONS

Noise Abatement (All Runways)

Comply with airfield specific noise abatement procedure as detailed in Navigraph/Aerosoft LIDO AOI pages.

EMERGENCY TURN PROCEDURES

RWY 10.

ALL SIDs.

Engine failure below 2500ft QNH: Continue on track 094°M to KLO 4d then turn LEFT to ZUE. At ZUE turn RIGHT on ZUE 096R to AMIKI for hold and return.

Engine failure above 2500ft QNH: No restrictions provided that SIDs are followed.

RWY 16.

ALL SIDs.

No restrictions provided that SIDs are followed.

RWY 28.

ALL SIDs.

Engine failure before KLO 2.3d: Follow the SID to KLO 2.3d then turn LEFT to track 219°M and at KLO 10.5d turn RIGHT to GIPOL for hold and return.

Engine failure after KLO 2.3d: No restrictions provided that SIDs are followed.

RWY 32 and RWY 34.

ALL SIDs.

Engine failure below 3500ft QNH: Continue on track 330°M (RWY 32) or 333°M (RWY 34) to KLO 7d then turn LEFT to GIPOL for hold and return.

Engine failure above 3500ft QNH: No restrictions provided that SIDs are followed.

Note: The RWY 16 ETPs are based on the 'Initial Climb - IMC' in the LIDO SID charts. The SID tracks and the holding patterns at AMIKI and GIPOL have been checked for terrain clearance. ATC required altitudes may not be met. Crew should ensure that the MSA has been achieved if continuing beyond the published SID.

IZMIR ADNAN MENDERES (LTBJ)**EMERGENCY TURN PROCEDURES****RWY 16L & 16R****BERGO, OKESA, REDRA, RIKSO, SITRU and VEXOL SIDs**

Engine failure below 4000ft QNH - Climb on RWY heading to 8D MEN.

Turn LEFT to VOR/DME MEN for hold and return.

Engine failure above 4000ft QNH – No restrictions provided SID followed.

BAPSI KULAR and SISVO SIDs – Not approved for BAV use.

RWY 34L & 34R**BERGO1E, VEXOL1E, SITRU1E, REDRA1E, OKESA1E and RIKSO1E SIDs**

Engine failure BEFORE VOR/DME MEN - Follow SID to MEN for hold and return.

Engine failure AFTER VOR/DME MEN – No restrictions provided SID followed.

BERGO1G SID

Engine failure BEFORE VOR/DME MEN 6D - Follow SID to MEN 6D. Turn RIGHT to MEN for hold and return.

Engine failure AFTER VOR/DME 6D MEN but BEFORE 14D MEN – Follow SID to 10D MEN. Turn LEFT onto hdg 260 (If beyond 10D MEN turn immediately). Intercept IMR R316. Climb to MSA.

Engine failure AFTER VOR/DME MEN 14D - No restrictions provided SID followed.

OKESA1G, REDRA1G, RIKSO1G, SITRU1G and VEXOL1G SIDs.

Engine failure BEFORE VOR/DME MEN 10D - Follow SID to MEN 6D. Turn RIGHT (If beyond MEN 6D turn RIGHT immediately) to MEN for hold and return.

Engine failure AFTER VOR/DME MEN 10D - No restrictions provided SID followed.

ALL BAPSI, KULAR, SISVO SIDs and BERGO1T, OKESA1T, REDRA1T, RIKSO1T, SITRU1T and VEXOL1T SIDs

Not approved for BAV use.

DALAMAN MUGLA (LTBS)

EMERGENCY TURN PROCEDURES

RWY 01

CONVENTIONAL SIDs.

In order to ensure terrain separation is achieved on conventional SIDs, do not exceed 200kts until the aircraft is either established inbound to DAL or established on DAL 11d ARC (VOR/DME SIDs) or DAL 10d ARC (NDB/DME SIDs).

KEKIK1R and KEKIK1M SIDs

Engine failure BEFORE intercepting 315R DAL - Follow SID to 11d DAL. Turn LEFT and Intercept 11d DAL ARC. Climb to MSA and contact ATC for return.

Engine failure AFTER intcp 315R DAL - No restrictions provided SID followed to MSA.

KEKIK1T, KEKIK1P, MARIS, SOTIV, OZYAK, ALTIN and BENEM SIDs.

No restrictions provided SID followed to MSA.

RNAV SIDs

KEKIK, MARIS and SOTIV SIDs

Engine failure BEFORE UMRUL - Follow SID to BS301. Turn LEFT towards UMRUL. Turn LEFT to intercept DAL 11d ARC. Climb to MSA and contact ATC for return.

Engine failure AFTER UMRUL - No restrictions provided SID followed to MSA.

ALTIN, BIRPU and RIVBU SIDs.

These SIDs are not authorised for BAV use as terrain clearance is not assured.

RWY 19

KEKIK1C and MARIS1C SIDs

Engine failure BEFORE BS104 - Climb on RWY heading to MSA.

Engine failure AFTER BS104 but BEFORE BS106 – Turn LEFT onto heading 180M and climb to MSA. Contact ATC for return.

Engine failure AFTER BS106 - No restrictions provided SID followed to MSA.

ALTIN1E, ALTIN1N, OZYAK1E, OZYAK1N, KEKIK1E, KEKIK1S, KEKIK1L, KEKIK1N, MARIS1E, MARIS1S, MARIS1L and MARIS1N SIDs

No restrictions provided SID altitude constraint achieved before proceeding beyond DAL.

SOTIV, BENEM and BIRPU SIDs

No restrictions provided SID followed to MSA.

ALTIN1C and RIVBU1C SIDs

These SIDs are not authorised for BAV use as terrain clearance is not assured.

BODRUM MILAS (LTFE)**EMERGENCY TURN PROCEDURES****RWY 10L/10R****AKBUK1B/1G SID.**

Engine failure before BDR: Follow SID to BDR for hold and return.

Engine failure after BDR: No restrictions provided that SID followed.

AKSEK1B/1G and YUNUS1B/1G SIDs.

Engine failure before BDR 7d: Follow SID to BDR 7d. Turn RIGHT to BDR for hold and return.

Engine failure after BDR 7d but before LEFT turn onto SID track: Follow BDR 7d arc and contact ATC for return.

Engine failure after LEFT turn onto SID track: No restrictions provided that SIDs followed.

AKBUK1N/1H SID.

Engine failure before BDR 10d: Follow SID to BDR 7d. Turn RIGHT (if beyond BDR 7d turn RIGHT immediately) to BDR for hold and return.

Engine failure after BDR 10d: No restrictions provided that SID followed.

CENGO1B/1G SID.

Engine failure before BDR 7d: Intercept and follow BDR 104R to BDR 7d. Turn RIGHT to BDR for hold and return.

Engine failure after BDR 7d but before BDR 10d: Turn RIGHT immediately to BDR for hold and return.

Engine failure after BDR 10d: No restrictions provided that SID followed.

AKBUK1D and YUNUS1D SIDs.

Engine failure before FE090: Follow SID to FE090. Turn RIGHT to BDR for hold and return.

Engine failure after FE090: No restrictions provided that SID followed to MSA.

KAVAK1D and MARIS1D SIDs.

SIDs not approved for BAV operations.

RWY 28L/28R**AKBUK1A and CENGO1A SIDs.**

Engine failure before BDR 7d: Follow SID to BDR 7d. Turn LEFT onto heading 260°M. Climb to MSA.

Engine failure after BDR 7d and before BDR: Follow SID to BDR for hold and return.

Engine failure after BDR: No restrictions provided that SIDs followed.

AKBUK1E SID.

Engine failure before BDR 13d: Follow SID to BDR 13d then turn LEFT onto heading 260°M. Climb to MSA.

Engine failure after BDR 13d: No restrictions provided that SIDs followed.

AKSEK1A, CENGO1E and YUNUS1A SIDs.

Engine failure before BDR 7d: Follow SID to BDR 7d then turn LEFT onto heading 260°M. Climb to MSA.

Engine failure after BDR 7d but before RIGHT turn onto SID track: Follow BDR 7d arc and contact ATC for return.

Engine failure after RIGHT turn onto SID track:: No restrictions provided that SID followed.

AKBUK1V SID.

Engine failure before FE071: Follow SID to FE071. Turn LEFT onto heading 260°M.

Climb to MSA.

Engine failure after FE071: No restrictions provided that SID followed to MSA.

KAVAK1V, AKSEK1V and YUNUS1V SIDs.

Engine failure before FE072: Follow SID onto heading 193°M towards FE072. Turn RIGHT onto heading 270°M. Climb to MSA.

Engine failure after FE072: No restrictions provided that SID followed to MSA.

ISTANBUL YENI HAVALIMANI (LTFM)

EMERGENCY TURN PROCEDURES

RWY 16L/R

RATVU2T, ASMAP2T, RATVU2F and ASMAP2F SIDs

Engine failure BEFORE RNAV WAYPT ASGAX - follow SID to ASGAX. Turn onto TRK 200M and contact ATC for return.

Engine failure AFTER RNAV WAYPT ASGAX - no restrictions provided SID followed to MSA.

ELNUG IST MAKOL OSMEV VADEN TUDBU IBLAL BARPE and IVGUS SIDs

No restrictions provided SID followed to MSA.

RWY 17L/R

RATVU2U and ASMAP2U SIDs

Engine failure BEFORE RNAV WAYPT FM077 - follow SID to FM077. Turn onto TRK 200M and contact ATC for return.

Engine failure AFTER RNAV WAYPT FM077 - no restrictions provided SID followed to MSA.

RATVU2G and ASMAP2G SIDs

Engine failure BEFORE RNAV WAYPT TIBNU - follow SID to TIBNU. Turn onto TRK 200M and contact ATC for return.

Engine failure AFTER RNAV WAYPT TIBNU - no restrictions provided SID followed to MSA.

MAKOL, OSMEV, VADEN, TUDBU, IBLAL, BARPE and IVGUS SIDs

No restrictions provided SID followed to MSA.

RWY 34L/R

RATVU2C, ASMAP2C, ASMAP2Q and RATVU2Q SIDs

Engine failure BEFORE RNAV WAYPT FM042 - follow SID to FM042. Turn onto TRK 200M and contact ATC for return.

Engine failure AFTER RNAV WAYPT FM042 - no restrictions provided SID followed to MSA.

BARPE, IVGUS, MAKOL, OSMEV, VADEN, TUDBU and IBLAL SIDs

No restrictions provided SID followed to MSA.

RWY 35L/R

RATVU2D, RATVU2R, ASMAP2D and ASMAP2R SIDs

Engine failure BEFORE RNAV WAYPT FM042 - follow SID to FM042. Turn onto TRK 200M and contact ATC for return.

Engine failure AFTER RNAV WAYPT FM042 - no restrictions provided SID followed to MSA.

BARPE IST IVGUS LADUX MAKOL OSMEV VADEN TUDBU and IBLAL SIDs

No restrictions provided SID followed to MSA.

AMMAN QUEEN ALIA INTL (OJAI)**EMERGENCY TURN PROCEDURES****RWY 08L**

GENEX, KINUR, KIRAJ, KULDI, LOSAR, LOSIL, LUDAN, MOUAB, MUNRA, MUVIN OSAMA, QTR and RALNA SIDs.

Engine failure BEFORE VOR/DME QAA 3.1d or RNAV waypoint KITUT:

- Follow SID to QAA 3.1d or RNAV waypoint KITUT then turn left to NDB MDB for hold and return.

Engine failure AFTER VOR/DME QAA 3.1d or RNAV waypoint KITUT

- No restrictions provided SID followed and MSA achieved.

RWY 08R

KINUR, KULDI, LOSAR, LUDAN, MOUAB, MUVIN, OSAMA, QTR and RALNA SIDs.

Engine failure before VOR/DME QAA 3.1d or RNAV waypoint SIVIK

- Follow SID to QAA 3.1d or RNAV waypoint SIVIK then turn left to NDB MDB for hold and return.

Engine failure after VOR/DME QAA 3.1d or RNAV waypoint SIVIK:

- No restrictions provided SID followed.