

VANCOUVER (YVR/CYVR)

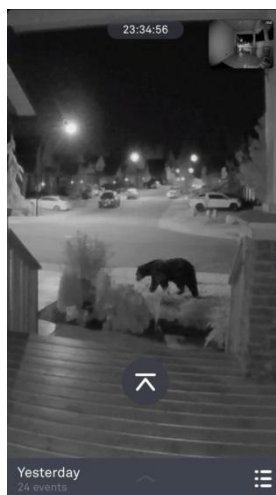
Elevation 13ft

CATEGORY A

No AV brief required.

GENERAL

- Airfield is situated 2nm to the S of the city of Vancouver at the mouth of the River Fraser
- Significant EASTERLY variation (19°E)
- Known as the Hollywood of the North, the city comes second to Los Angeles in TV production and third in feature film production behind Los Angeles and New York
- Bears may be encountered on movement areas



- All the grey squirrels in Stanley Park are descendants of eight pairs of grey squirrels received as a gift from New York City in 1909

Threat Based Briefing Topics

CFIT

- 30nm W Is Vancouver Island, peaks to ~7,000ft asl
- N is an E-W range of mountains. The 2,000ft asl contour is at a range of 9nm and ~6,000ft asl at 17nm N
- Further N are peaks to ~10,000ft asl
- Cascade Mountain Range rises steeply at 40nm E and SE with peaks to ~11,000ft asl

Runway Incursion

- Lido AOI gives details of taxiway restrictions, note advises Rwy 26L arrivals not authorised to turn on to the intersecting Rwy 31 without clearance

Loss of Control

- Birds are a hazard, especially during Spring and Autumn
- Bears may also be a concern

ARRIVAL

Diversion Airports

SEATTLE	SEA/KSEA	111 nm/162°T	CAT A
SAN FRANCISCO	SFO/KSFO	696 nm/177°T	CAT B
PORTLAND	PDX/KPDX	218 nm/174°T	CAT A
CALGARY	YYC/CYYC	371 nm/072°T	CAT A

Approach

- Expect radar vectors
- Converging ILS procedures are published
- Lido AOI has Noise Procedures pages, including details of preferred runways
- Visual Approach procedures are published

GROUND

- Call local company frequency with arrival and departure chocks times
- Part of taxiway to the S of Rwy 08R/27L used as a runway; designated Rwy 26A (~1000m)
- Refer to the Lido AOI for notes regarding Coded Taxi Routes
- Steve Williams' house is available for accommodation in the event of aircraft struck by lightning
- Excellent IPA available from the Hearthstone Brewery

Taxi

- Numerous A380 taxi restrictions. LIDO charts show A380 taxi routes in green on charts 3-90 and 3-100
- Crew reports indicate that unlit aircraft may be parked to the left of taxiway V in de-icing pans W17, W18 and W19. Wingtip clearance appeared minimal, so taxi with caution.
- Gate 64 preferred for A380 operations, Gate 65 alternative

DEPARTURE

- Performance restrictions available from CARD and the Performance Manual
- Rwy 08L/26R full length start-points are Twys M10 and M9

- For take-off data from Twys M8 and M7 select Intersections on the CARD request
- Simultaneous Parallel departures may be in use

WEATHER

- Possible poor visibility with NE wind due to smoke
- Fog from October to January – particularly November
- Rain may fall as snow from November to March

OPERATIONAL INFORMATION

Handling Agent	BA (Pax)/Swissport (Ramp)
Handling Agent VHF	130.2
Potable Water	Uplift Permitted

IF ONLY Electrical Power is required	Use ground power at all times
If BOTH electrical power and air conditioning is required:	Use both ground services at all times

